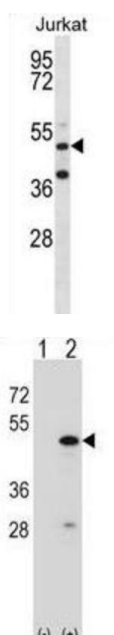
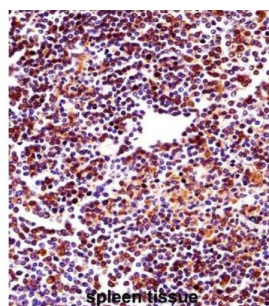


RNA Binding Motif Protein 22 (RBM22) Antibody

Catalogue No.: abx028405



This gene encodes an RNA binding protein. The encoded protein may play a role in cell division and may be involved in pre-mRNA splicing. Related pseudogenes exist on chromosomes 6, 7, 9, 13, 16, 18, and X.

Target: RNA Binding Motif Protein 22 (RBM22)

Clonality: Polyclonal

Reactivity: Human

Tested Applications: ELISA, WB, IHC

Host: Rabbit

Recommended dilutions: WB: 1/1000, IHC-P: 1/10 - 1/50. Not tested in IHC-F. Optimal dilutions/concentrations should be determined by the end user.

Datasheet

Version: 4.0.0
Revision date: 23 Jul 2025



Conjugation:	Unconjugated
Immunogen:	KLH-conjugated synthetic peptide between 165-193 amino acids from the Central region of human RBM22.
Isotype:	IgG
Form:	Liquid
Purification:	Purified through a protein A column, followed by peptide affinity purification.
Storage:	Aliquot and store at -20°C. Avoid repeated freeze/thaw cycles.
UniProt Primary AC:	Q9NW64 (UniProt , ExPASy)
Gene Symbol:	RBM22
String:	9606.ENSP00000199814
Molecular Weight:	Calculated MW: 46.9 kDa
Buffer:	PBS containing 0.09% sodium azide.
Specificity:	Predicted to react with Mouse, Rat, Cow, Chicken, Monkey, Zebrafish and Xenopus RBM22.
Note:	THIS PRODUCT IS FOR RESEARCH USE ONLY. NOT FOR USE IN DIAGNOSTIC, THERAPEUTIC OR COSMETIC PROCEDURES. NOT FOR HUMAN OR ANIMAL CONSUMPTION.