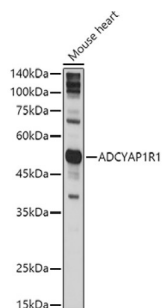
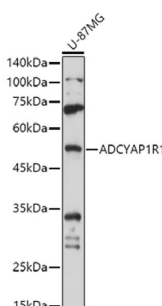


# Pituitary Adenylate Cyclase-Activating Polypeptide Type I Receptor (ADCYAP1R1) Antibody

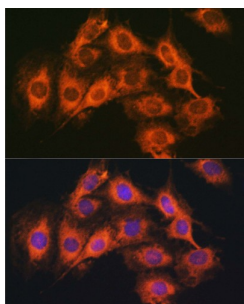
Catalogue No.: abx002241



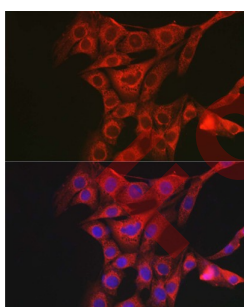
Western blot analysis of lysates from Mouse heart, using ADCYAP1R1 Antibody at 1/1000 dilution. Secondary antibody: HRP-conjugated Goat anti-Rabbit IgG (H+L) at 1/10000 dilution. Lysates/proteins: 25 µg per lane. Blocking buffer: 3% nonfat dry milk in TBST. Exposure time: 5s.



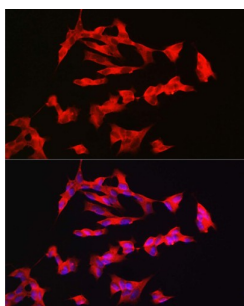
Western blot analysis of lysates from U-87MG cells, using ADCYAP1R1 Antibody at 1/1000 dilution. Secondary antibody: HRP-conjugated Goat anti-Rabbit IgG (H+L) at 1/10000 dilution. Lysates/proteins: 25 µg per lane. Blocking buffer: 3% nonfat dry milk in TBST. Exposure time: 30s.



Immunofluorescence analysis of C6 cells using ADCYAP1R1 Antibody at dilution of 1/100 (40x lens). Secondary antibody: Cy3-conjugated Goat anti-Rabbit IgG (H+L) at 1/500 dilution. Blue: DAPI for nuclear staining.



Immunofluorescence analysis of NIH/3T3 cells using ADCYAP1R1 Antibody at dilution of 1/100 (40x lens). Secondary antibody: Cy3-conjugated Goat anti-Rabbit IgG (H+L) at 1/500 dilution. Blue: DAPI for nuclear staining.



Immunofluorescence analysis of SH-SY5Y cells using ADCYAP1R1 Antibody at dilution of 1/100 (40x lens). Secondary antibody: Cy3-conjugated Goat anti-Rabbit IgG (H+L) at 1/500 dilution. Blue: DAPI for nuclear staining.

# Datasheet

Version: 3.0.0  
Revision date: 11 Jun 2025



ADCYAP1R1 Antibody is a Rabbit Polyclonal antibody against ADCYAP1R1. This gene encodes type I adenylate cyclase activating polypeptide receptor, which is a membrane-associated protein and shares significant homology with members of the glucagon/secretin receptor family. This receptor mediates diverse biological actions of adenylate cyclase activating polypeptide 1 and is positively coupled to adenylate cyclase. Multiple alternatively spliced transcript variants encoding distinct isoforms have been identified.

<b>Target:</b>	Pituitary Adenylate Cyclase-Activating Polypeptide Type I Receptor (ADCYAP1R1)
<b>Clonality:</b>	Polyclonal
<b>Reactivity:</b>	Human, Mouse, Rat
<b>Tested Applications:</b>	ELISA, WB, IF/ICC
<b>Host:</b>	Rabbit
<b>Recommended dilutions:</b>	ELISA: 1 µg/ml, WB: 1/500 - 1/1000, IF/ICC: 1/50 - 1/200. Optimal dilutions/concentrations should be determined by the end user.
<b>Conjugation:</b>	Unconjugated
<b>Immunogen:</b>	Recombinant fusion protein containing a sequence corresponding to amino acids 25-140 of human ADCYAP1R1.
<b>Isotype:</b>	IgG
<b>Form:</b>	Liquid
<b>Purification:</b>	Purified by affinity chromatography.
<b>Storage:</b>	Aliquot and store at -20°C. Avoid repeated freeze/thaw cycles.
<b>UniProt Primary AC:</b>	P41586 ( <a href="#">UniProt</a> , <a href="#">ExPASy</a> )
<b>Gene Symbol:</b>	ADCYAP1R1
<b>GeneID:</b>	<a href="#">117</a>
<b>OMIM:</b>	<a href="#">102981</a>
<b>NCBI Accession:</b>	NP_001109.2
<b>HGNC:</b>	242
<b>KEGG:</b>	hsa:117

# Datasheet

Version: 3.0.0

Revision date: 11 Jun 2025



**Ensembl:** ENSG00000078549

**String:** [9606.ENSP00000483721](#)

**Molecular Weight:** Calculated MW: 53 kDa

Observed MW: 53 kDa

**Buffer:** PBS, pH 7.3, containing 0.01% thimerosal, 50% glycerol.

**Concentration:** > 0.2 mg/ml

**Note:** THIS PRODUCT IS FOR RESEARCH USE ONLY. NOT FOR USE IN DIAGNOSTIC, THERAPEUTIC OR COSMETIC PROCEDURES. NOT FOR HUMAN OR ANIMAL CONSUMPTION.

For Reference Only