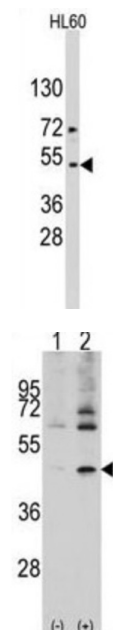
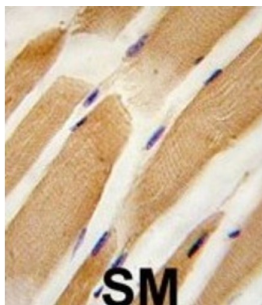


## Actin (ACTB / ACTC) Antibody

Catalogue No.: abx028417



Actins are highly conserved proteins that are involved in cell motility, structure, and integrity. ACTB/ACTC are nonmuscle cytoskeletal actins and major constituents of the contractile apparatus. Defects in ACTB are a cause of juvenile-onset dystonia. Defects in ACTC have been associated with idiopathic dilated cardiomyopathy (IDC) and familial hypertrophic cardiomyopathy (FHC).

**Target:** Actin (ACTB/ACTC)

**Clonality:** Polyclonal

**Reactivity:** Human

**Tested Applications:** ELISA, WB, IHC

**Host:** Rabbit

**Recommended dilutions:** WB: 1/1000, IHC-P: 1/10 - 1/50. Not tested in IHC-F. Optimal dilutions/concentrations should be determined by the end user.

# Datasheet

Version: 3.0.0  
Revision date: 28 Jun 2025



<b>Conjugation:</b>	Unconjugated
<b>Immunogen:</b>	KLH-conjugated synthetic peptide between 189-218 amino acids from the Central region of human Actin (ACTB/ACTC).
<b>Isotype:</b>	IgG
<b>Form:</b>	Liquid
<b>Purification:</b>	Purified Rabbit Polyclonal Antibody.
<b>Storage:</b>	Aliquot and store at -20°C. Avoid repeated freeze/thaw cycles.
<b>UniProt Primary AC:</b>	P68032 ( <a href="#">UniProt</a> , <a href="#">ExPASy</a> )
<b>KEGG:</b>	hsa:70
<b>String:</b>	<a href="#">9606.ENSP00000290378</a>
<b>Molecular Weight:</b>	Calculated MW: 42 kDa
<b>Buffer:</b>	PBS containing 0.09% sodium azide.
<b>Specificity:</b>	Predicted to react with Mouse, Rat, Cow, Pig, Hamster, Sheep, Monkey, Yeast, Zebrafish, Drosophila, Xenopus and C. elegans ACTC1.
<b>Note:</b>	THIS PRODUCT IS FOR RESEARCH USE ONLY. NOT FOR USE IN DIAGNOSTIC, THERAPEUTIC OR COSMETIC PROCEDURES. NOT FOR HUMAN OR ANIMAL CONSUMPTION.