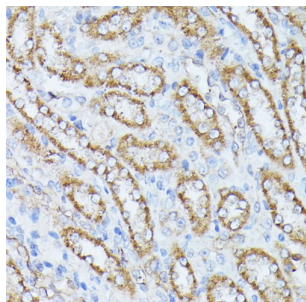
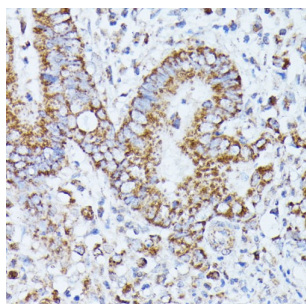


Protein Phosphatase 2 Catalytic Subunit Beta (PPP2CB) Antibody

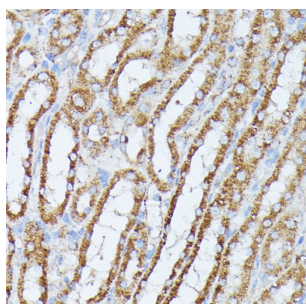
Catalogue No.: abx002243



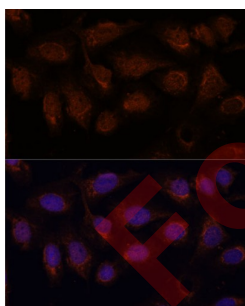
Immunohistochemistry of paraffin-embedded Rat kidney using PPP2CB Antibody (1/100 dilution, 40x lens).



Immunohistochemistry of paraffin-embedded Human colon carcinoma using PPP2CB Antibody (1/100 dilution, 40x lens).



Immunohistochemistry of paraffin-embedded Mouse kidney using PPP2CB Antibody (1/100 dilution, 40x lens).



Immunofluorescence analysis of U-2 OS cells using PPP2CB Antibody (1/100 dilution). Blue: DAPI for nuclear staining.

PPP2CB Antibody is a Rabbit Polyclonal antibody against PPP2CB. This gene encodes the phosphatase 2A catalytic subunit. Protein phosphatase 2A is one of the four major Ser/Thr phosphatases, and it is implicated in the negative control of cell growth and division. It consists of a common heteromeric core enzyme, which is composed of a catalytic subunit and a constant regulatory subunit, that associates with a variety of regulatory subunits. This gene encodes a beta isoform of the catalytic subunit.

Target:

Protein Phosphatase 2 Catalytic Subunit Beta (PPP2CB)

Datasheet

Version: 4.0.0
Revision date: 30 Sep 2025



| | |
|------------------------|--|
| Clonality: | Polyclonal |
| Reactivity: | Human, Mouse, Rat |
| Tested Applications: | IHC, IF/ICC |
| Host: | Rabbit |
| Recommended dilutions: | IHC-P: 1/100 - 1/200, IF/ICC: 1/50 - 1/200. Not tested in IHC-F. Optimal dilutions/concentrations should be determined by the end user. |
| Conjugation: | Unconjugated |
| Immunogen: | Recombinant fusion protein corresponding to human PPP2CB |
| Isotype: | IgG |
| Form: | Liquid |
| Purification: | Purified by affinity chromatography. |
| Storage: | Aliquot and store at -20°C. Avoid repeated freeze/thaw cycles. |
| UniProt Primary AC: | P62714 (UniProt , ExPASy) |
| Gene Symbol: | PPP2CB |
| GeneID: | 5516 |
| NCBI Accession: | NP_001009552.1 |
| KEGG: | hsa:5516 |
| String: | 9606.ENSP00000221138 |
| Buffer: | PBS, pH 7.3, containing 0.02% sodium azide, 50% glycerol. |
| Concentration: | 1 mg/ml |
| Note: | THIS PRODUCT IS FOR RESEARCH USE ONLY. NOT FOR USE IN DIAGNOSTIC, THERAPEUTIC OR COSMETIC PROCEDURES. NOT FOR HUMAN OR ANIMAL CONSUMPTION. |