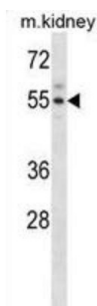


Activin A Receptor Type 2A (ACVR2A) Antibody

Catalogue No.: abx028450



WB analysis of mouse kidney tissue (35 µg).

On ligand binding, forms a receptor complex consisting of two type II and two type I transmembrane serine/threonine kinases. Type II receptors phosphorylate and activate type I receptors which autophosphorylate, then bind and activate SMAD transcriptional regulators. Receptor for activin A, activin B and inhibin A.

Target:	Activin A Receptor Type 2A (ACVR2A)
Clonality:	Polyclonal
Reactivity:	Mouse
Tested Applications:	ELISA, WB
Host:	Rabbit
Recommended dilutions:	WB: 1/1000. Optimal dilutions/concentrations should be determined by the end user.
Conjugation:	Unconjugated
Immunogen:	KLH-conjugated synthetic peptide between 22-49 amino acids from the N-terminal region of mouse Acvr2a.
Isotype:	IgG
Form:	Liquid
Purification:	Purified through a protein A column, followed by peptide affinity purification.
Storage:	Aliquot and store at -20°C. Avoid repeated freeze/thaw cycles.
UniProt Primary AC:	P27038 (UniProt , ExPASy)
KEGG:	mmu:11480

Datasheet

Version: 6.0.0

Revision date: 28 Sep 2025



String: [10090.ENSMUSP00000067305](#)

Molecular Weight: Calculated MW: 57.9 kDa

Buffer: PBS containing 0.09% sodium azide.

Specificity: Predicted to react with Rat Acvr2a.

Note: THIS PRODUCT IS FOR RESEARCH USE ONLY. NOT FOR USE IN DIAGNOSTIC, THERAPEUTIC OR COSMETIC PROCEDURES. NOT FOR HUMAN OR ANIMAL CONSUMPTION.

For Reference Only