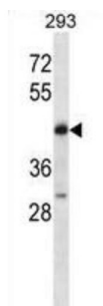


POU Class 4 Homeobox 2 (POU4F2) Antibody

Catalogue No.: abx028470



POU4F2 is a member of the POU-domain family of transcription factors. POU-domain proteins have been observed to play important roles in control of cell identity in several systems. A class IV POU-domain protein, POU4F2 is found in human retina exclusively within a subpopulation of ganglion cells where it may play a role in determining or maintaining the identities of a small subset of visual system neurons.

Target: POU Class 4 Homeobox 2 (POU4F2)

Clonality: Polyclonal

Reactivity: Human

Tested Applications: ELISA, WB

Host: Rabbit

Recommended dilutions: WB: 1/1000. Optimal dilutions/concentrations should be determined by the end user.

Conjugation: Unconjugated

Immunogen: KLH-conjugated synthetic peptide between 311-339 amino acids from the C-terminal region of human POU4F2.

Isotype: IgG

Form: Liquid

Purification: Purified through a protein A column, followed by peptide affinity purification.

Storage: Aliquot and store at -20°C. Avoid repeated freeze/thaw cycles.

UniProt Primary AC: Q12837 ([UniProt](#), [ExPASy](#))

KEGG: hsa:5458

Datasheet

Version: 7.0.0

Revision date: 19 Aug 2025



String: [9606.ENSPO0000281321](#)

Molecular Weight: Calculated MW: 43.1 kDa

Buffer: PBS containing 0.09% sodium azide.

Specificity: Predicted to react with Mouse and Rat POU4F2.

Note: THIS PRODUCT IS FOR RESEARCH USE ONLY. NOT FOR USE IN DIAGNOSTIC, THERAPEUTIC OR COSMETIC PROCEDURES. NOT FOR HUMAN OR ANIMAL CONSUMPTION.

For Reference Only