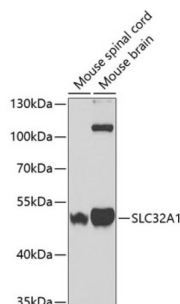


Solute Carrier Family 32 Member 1 (SLC32A1) Antibody

Catalogue No.: abx002248



Western blot analysis of various lysates using SLC32A1 Antibody at 1/400 dilution. Secondary antibody: HRP-conjugated Goat anti-Rabbit IgG (H+L) at 1/10000 dilution. Lysates/proteins: 25 µg per lane. Blocking buffer: 3% nonfat dry milk in TBST.

SLC32A1 Antibody is a Rabbit Polyclonal antibody against SLC32A1. Vesicular inhibitory amino acid transporter is a protein that in humans is encoded by the SLC32A1 gene. The protein encoded by this gene is an integral membrane protein involved in gamma-aminobutyric acid (GABA) and glycine uptake into synaptic vesicles. The encoded protein is a member of amino acid/polyamine transporter family II.

Target:	Solute Carrier Family 32 Member 1 (SLC32A1)
Clonality:	Polyclonal
Reactivity:	Human, Mouse, Rat
Tested Applications:	ELISA, WB
Host:	Rabbit
Recommended dilutions:	ELISA: 1 µg/ml, WB: 1/1000 - 1/2000. Optimal dilutions/concentrations should be determined by the end user.
Conjugation:	Unconjugated
Immunogen:	Recombinant protein corresponding to SLC32A1. The exact sequence is proprietary.
Isotype:	IgG
Form:	Liquid
Purification:	Purified by affinity chromatography.
Storage:	Aliquot and store at -20°C. Avoid repeated freeze/thaw cycles.
UniProt Primary AC:	Q9H598 (UniProt , ExPASy)
Gene Symbol:	SLC32A1

Datasheet

Version: 5.0.0

Revision date: 16 Jul 2025



GeneID: [140679](#)

String: [9606.ENSP00000217420](#)

Molecular Weight: Calculated MW: 57 kDa
Observed MW: 53 kDa

Buffer: PBS, pH 7.3, containing 0.02% sodium azide, 50% glycerol.

Concentration: 1.47 mg/ml

Note: THIS PRODUCT IS FOR RESEARCH USE ONLY. NOT FOR USE IN DIAGNOSTIC, THERAPEUTIC OR COSMETIC PROCEDURES. NOT FOR HUMAN OR ANIMAL CONSUMPTION.

For Reference Only