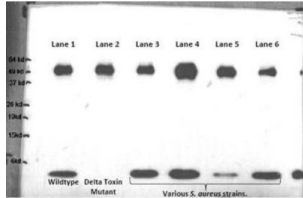


Delta Hemolysin (hld) Antibody

Catalogue No.: abx028478



WB analysis of (1) wildtype *S. aureus* strain, (2) isogenic delta toxin mutant, and (3-6) various *S. aureus* clinical isolates. The lower MW band is delta toxin (absent in the mutant) and the higher MW band is protein A.

Delta Hemolysin (hld) Antibody is a Rabbit Polyclonal antibody for the detection of *S. Aureus* Delta Hemolysin, a bacterial toxin that lyses erythrocytes and many other mammalian cells.

Target: Delta Hemolysin (hld)

Clonality: Polyclonal

Reactivity: Bacteria

Tested Applications: ELISA, WB

Host: Rabbit

Recommended dilutions: WB: 1/1000. Optimal dilutions/concentrations should be determined by the end user.

Conjugation: Unconjugated

Immunogen: KLH-conjugated peptide (1-30 AA) from delta hemolysin protein of *Staphylococcus aureus*.

Isotype: IgG

Form: Liquid

Purification: Purified through a protein A column, followed by two-step phosphospecific peptide affinity purification.

Storage: Aliquot and store at -20°C. Avoid repeated freeze/thaw cycles.

UniProt Primary AC: P0C1V1 ([UniProt](#), [ExPASy](#))

Molecular Weight: Calculated MW: 2.98 kDa

Datasheet

Version: 7.0.0

Revision date: 01 Oct 2025



Buffer: PBS containing 0.09% sodium azide.

Specificity: Reacts with *S. aureus* Delta Hemolysin.

Concentration: 0.4 mg/ml

Note: THIS PRODUCT IS FOR RESEARCH USE ONLY. NOT FOR USE IN DIAGNOSTIC, THERAPEUTIC OR COSMETIC PROCEDURES. NOT FOR HUMAN OR ANIMAL CONSUMPTION.

For Reference Only