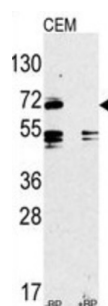
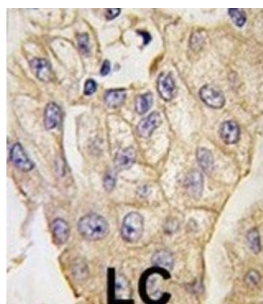
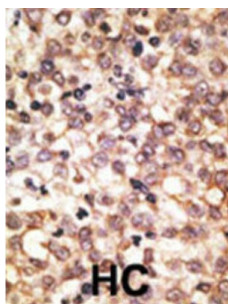


## Toll Like Receptor 2 (TLR2) Antibody

Catalogue No.: abx028480



TLR2 is a member of the Toll-like receptor (TLR) family which plays a fundamental role in pathogen recognition and activation of innate immunity. TLRs are highly conserved from *Drosophila* to humans and share structural and functional similarities. They recognize pathogen-associated molecular patterns (PAMPs) that are expressed on infectious agents, and mediate the production of cytokines necessary for the development of effective immunity. The various TLRs exhibit different patterns of expression. TLR2 is expressed most abundantly in peripheral blood leukocytes, and mediates host response to Gram-positive bacteria and yeast via stimulation of NF-kappaB.

**Target:** Toll Like Receptor 2 (TLR2)

**Clonality:** Polyclonal

**Reactivity:** Mouse

**Tested Applications:** ELISA, WB, IHC

**Host:** Rabbit

# Datasheet

Version: 2.0.0  
Revision date: 06 Mar 2025



**Recommended dilutions:** WB: 1/2000, IHC-P: 1/500. Not tested in IHC-F. Optimal dilutions/concentrations should be determined by the end user.

**Conjugation:** Unconjugated

**Immunogen:** KLH-conjugated synthetic peptide between 720-749 amino acids from the C-terminal region of mouse TLR2.

**Isotype:** IgG

**Form:** Liquid

**Purification:** Purified through a protein G column, eluted with high and low pH buffers and neutralized immediately, followed by dialysis against PBS.

**Storage:** Aliquot and store at -20°C. Avoid repeated freeze/thaw cycles.

**UniProt Primary AC:** Q9QUN7 ([UniProt](#), [ExPASy](#))

**String:** [10090.ENSMUSP00000029623](#)

**Molecular Weight:** Calculated MW: 89.4 kDa

**Buffer:** PBS containing 0.09% sodium azide.

**Note:** THIS PRODUCT IS FOR RESEARCH USE ONLY. NOT FOR USE IN DIAGNOSTIC, THERAPEUTIC OR COSMETIC PROCEDURES. NOT FOR HUMAN OR ANIMAL CONSUMPTION.