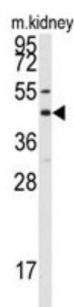
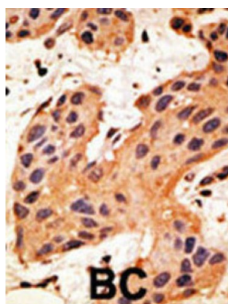


Gap Junction Alpha-8 Protein / CX50 (GJA8) Antibody

Catalogue No.: abx028506



GJA8 is an integral membrane protein that belongs to the connexin family, alpha-type (group II) subfamily. One gap junction consists of a cluster of closely packed pairs of transmembrane channels, the connexons, through which materials of low MW diffuse from one cell to a neighboring cell. A connexon is composed of a hexamer of connexins. This particular connexin only forms junctional channels. GJA8 is expressed in the eye lens, and defects in GJA8 are the cause of zonular pulverulent cataract type 1 (CZP1), a form of autosomal dominant congenital cataract.

Target: Gap Junction Alpha-8 Protein / CX50 (GJA8)

Clonality: Polyclonal

Reactivity: Human, Mouse

Tested Applications: ELISA, WB, IHC

Host: Rabbit

Recommended dilutions: WB: 1/1000, IHC-P: 1/50 - 1/100. Not tested in IHC-F. Optimal dilutions/concentrations should be determined by the end user.

Conjugation: Unconjugated

Immunogen: KLH-conjugated synthetic peptide between 402-433 amino acids from the C-terminal region of human Connexin 50.

Isotype: IgG

Datasheet

Version: 2.0.0
Revision date: 12 Oct 2025



Form:	Liquid
Purification:	Purified through a protein G column, eluted with high and low pH buffers and neutralized immediately, followed by dialysis against PBS.
Storage:	Aliquot and store at -20°C. Avoid repeated freeze/thaw cycles.
UniProt Primary AC:	P48165 (UniProt , ExPASy)
KEGG:	hsa:2703
String:	9606.ENSP00000358238
Molecular Weight:	Calculated MW: 48.2 kDa
Buffer:	PBS containing 0.09% sodium azide.
Specificity:	Predicted to react with Chicken and Sheep GJA8.
Note:	THIS PRODUCT IS FOR RESEARCH USE ONLY. NOT FOR USE IN DIAGNOSTIC, THERAPEUTIC OR COSMETIC PROCEDURES. NOT FOR HUMAN OR ANIMAL CONSUMPTION.

For Reference Only