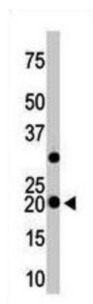
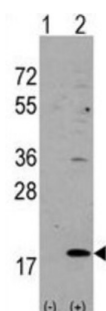
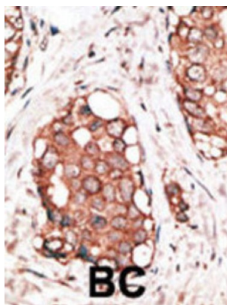


Visinin-Like Protein 3 (VILIP3) Antibody

Catalogue No.: abx028511



VILIP3 is a member of neuron-specific calcium-binding proteins family found in the retina and brain. It is highly similar to human hippocalcin protein and nearly identical to the rat and mouse hippocalcin like-1 proteins. It may be involved in the calcium-dependent regulation of rhodopsin phosphorylation and may be of relevance for neuronal signalling in the central nervous system. There are two alternatively spliced transcript variants of this gene, with multiple polyadenylation sites. Transcript variant 1 utilizes a different exon and also lacks one exon in the 5' UTR, as compared to variant 2; thus, the encoded protein is the same.

Target: Visinin-Like Protein 3 (VILIP3)

Clonality: Polyclonal

Reactivity: Human, Mouse

Tested Applications: ELISA, WB, IHC

Host: Rabbit

Datasheet

Version: 3.0.0

Revision date: 27 Aug 2025



Recommended dilutions: WB: 1/1000, IHC-P: 1/50 - 1/100. Not tested in IHC-F. Optimal dilutions/concentrations should be determined by the end user.

Conjugation: Unconjugated

Immunogen: KLH-conjugated synthetic peptide between 2-32 amino acids from the N-terminal region of human VILIP3.

Isotype: IgG

Form: Liquid

Purification: Purified through a protein G column, eluted with high and low pH buffers and neutralized immediately, followed by dialysis against PBS.

Storage: Aliquot and store at -20°C. Avoid repeated freeze/thaw cycles.

UniProt Primary AC: P37235 ([UniProt](#), [ExPASy](#))

KEGG: hsa:3241

String: [9606.ENSP00000483786](#)

Molecular Weight: Calculated MW: 22.3 kDa

Buffer: PBS containing 0.09% sodium azide.

Note: THIS PRODUCT IS FOR RESEARCH USE ONLY. NOT FOR USE IN DIAGNOSTIC, THERAPEUTIC OR COSMETIC PROCEDURES. NOT FOR HUMAN OR ANIMAL CONSUMPTION.