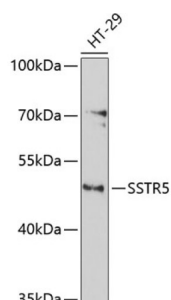


Somatostatin Receptor 5 (SSTR5) Antibody

Catalogue No.: abx002253



Western blot analysis of extracts of HT-29 cells using SSTR5 Antibody (1/1000 dilution).

SSTR5 Antibody is a Rabbit Polyclonal antibody against SSTR5. Somatostatin and its related peptide cortistatin exert multiple biological actions on normal and tumoral tissue targets by interacting with somatostatin receptors (SSTRs). The protein encoded by this gene is one of the SSTRs, which is a multi-pass membrane protein and belongs to the G-protein coupled receptor 1 family. The activity of this receptor is mediated by G proteins which inhibit adenylyl cyclase, and different regions of this receptor molecule are required for the activation of different signaling pathways. A mutation in this gene results in somatostatin analog resistance. Alternatively spliced transcript variants have been identified in this gene.

Target: Somatostatin Receptor 5 (SSTR5)

Clonality: Polyclonal

Reactivity: Human

Tested Applications: WB

Host: Rabbit

Recommended dilutions: WB: 1/500 - 1/1000. Optimal dilutions/concentrations should be determined by the end user.

Conjugation: Unconjugated

Immunogen: Recombinant fusion protein corresponding to human SSTR5

Isotype: IgG

Form: Liquid

Purification: Purified by affinity chromatography.

Storage: Aliquot and store at -20°C. Avoid repeated freeze/thaw cycles.

UniProt Primary AC: P35346 ([UniProt](#), [ExPASy](#))

Datasheet

Version: 4.0.0

Revision date: 14 Sep 2025



Gene Symbol: SSTR5

GeneID: [6755](#)

NCBI Accession: NP_001044.1

KEGG: hsa:6755

String: [9606.ENSP00000293897](#)

Molecular Weight: Calculated MW: 39 kDa
Observed MW: 50 kDa

Buffer: PBS, pH 7.3, containing 0.01% thiomersal, 50% glycerol.

Concentration: 1 mg/ml

Note: THIS PRODUCT IS FOR RESEARCH USE ONLY. NOT FOR USE IN DIAGNOSTIC, THERAPEUTIC OR COSMETIC PROCEDURES. NOT FOR HUMAN OR ANIMAL CONSUMPTION.

For Reference Only