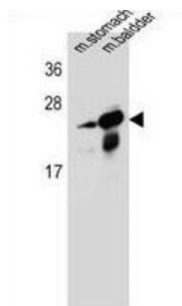


RAB25, Member RAS Oncogene Family (RAB25) Antibody

Catalogue No.: abx028533



RAB proteins, such as RAB25, are members of the RAS superfamily of small GTPases that are involved in membrane trafficking. Members of the RAB11 subfamily, including RAB25, control the return of internalized membrane-associated moieties to the cell surface (Caswell et al., 2007 [PubMed 17925226]).[supplied by OMIM].

Target:	RAB25, Member RAS Oncogene Family (RAB25)
Clonality:	Polyclonal
Reactivity:	Mouse
Tested Applications:	ELISA, WB
Host:	Rabbit
Recommended dilutions:	WB: 1/1000. Optimal dilutions/concentrations should be determined by the end user.
Conjugation:	Unconjugated
Immunogen:	KLH-conjugated synthetic peptide between 113-141 amino acids from the Central region of human RAB25.
Isotype:	IgG
Form:	Liquid
Purification:	Purified through a protein A column, followed by peptide affinity purification.
Storage:	Aliquot and store at -20°C. Avoid repeated freeze/thaw cycles.
UniProt Primary AC:	P57735 (UniProt , ExPASy)
KEGG:	hsa:57111

Datasheet

Version: 2.0.0

Revision date: 06 Mar 2025



String: [9606.ENSPO0000354376](#)

Molecular Weight: Calculated MW: 23.5 kDa

Buffer: PBS containing 0.09% sodium azide.

Specificity: Predicted to react with Rabbit RAB25.

Note: THIS PRODUCT IS FOR RESEARCH USE ONLY. NOT FOR USE IN DIAGNOSTIC, THERAPEUTIC OR COSMETIC PROCEDURES. NOT FOR HUMAN OR ANIMAL CONSUMPTION.

For Reference Only