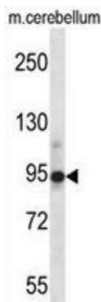


Chordin (CHRD) Antibody

Catalogue No.: abx028543



This gene encodes a secreted protein that dorsalizes early vertebrate embryonic tissues by binding to ventralizing TGF-beta-like bone morphogenetic proteins and sequestering them in latent complexes. The encoded protein may also have roles in organogenesis and during adulthood. Multiple transcript variants encoding distinct isoforms have been identified for this gene. Other alternative splice variants have been described but their full length sequence has not been determined.

Target: Chordin (CHRD)

Clonality: Polyclonal

Reactivity: Mouse

Tested Applications: ELISA, WB

Host: Rabbit

Recommended dilutions: WB: 1/1000. Optimal dilutions/concentrations should be determined by the end user.

Conjugation: Unconjugated

Immunogen: KLH-conjugated synthetic peptide between 439-467 amino acids from the Central region of human CHRD.

Isotype: IgG

Form: Liquid

Purification: Purified through a protein A column, followed by peptide affinity purification.

Storage: Aliquot and store at -20°C. Avoid repeated freeze/thaw cycles.

UniProt Primary AC: Q9H2X0 ([UniProt](#), [ExPASy](#))

Gene Symbol: CHRD

Datasheet

Version: 3.0.0

Revision date: 10 Aug 2025



String: [9606.ENSF00000204604](#)

Molecular Weight: Calculated MW: 102 kDa

Buffer: PBS containing 0.09% sodium azide.

Note: THIS PRODUCT IS FOR RESEARCH USE ONLY. NOT FOR USE IN DIAGNOSTIC, THERAPEUTIC OR COSMETIC PROCEDURES. NOT FOR HUMAN OR ANIMAL CONSUMPTION.

For Reference Only