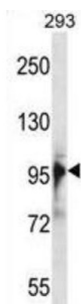


RNA Binding Motif Protein 10 (RBM10) Antibody

Catalogue No.: abx028559



The protein encoded by this gene contains RNA recognition motif found in a variety of RNA binding proteins, including various hnRNP proteins, proteins implicated in regulation of alternative splicing, and protein components of snRNPs. In vitro studies showed that the rat homolog bound to RNA homopolymers, with a preference for G and U polyribonucleotides. This gene is part of a gene cluster on chromosome Xp11.23, and its 3' end lies within 20 kb upstream of UBE1. Two transcript variants encoding different isoforms have been identified for this gene.

Target:	RNA Binding Motif Protein 10 (RBM10)
Clonality:	Polyclonal
Reactivity:	Human
Tested Applications:	ELISA, WB
Host:	Rabbit
Recommended dilutions:	WB: 1/1000. Optimal dilutions/concentrations should be determined by the end user.
Conjugation:	Unconjugated
Immunogen:	KLH-conjugated synthetic peptide between 85-113 amino acids from the N-terminal region of human RBM10.
Isotype:	IgG
Form:	Liquid
Purification:	Purified through a protein A column, followed by peptide affinity purification.
Storage:	Aliquot and store at -20°C. Avoid repeated freeze/thaw cycles.
UniProt Primary AC:	P98175 (UniProt , ExPASy)

Datasheet

Version: 2.0.0

Revision date: 09 Sep 2025



KEGG: hsa:8241

String: [9606.ENSP00000328848](#)

Molecular Weight: Calculated MW: 104 kDa

Buffer: PBS containing 0.09% sodium azide.

Specificity: Predicted to react with Mouse RBM10.

Note: THIS PRODUCT IS FOR RESEARCH USE ONLY. NOT FOR USE IN DIAGNOSTIC, THERAPEUTIC OR COSMETIC PROCEDURES. NOT FOR HUMAN OR ANIMAL CONSUMPTION.

For Reference Only