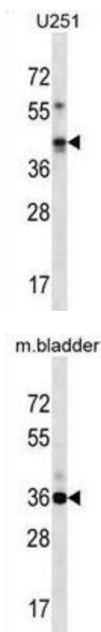


GIPC PDZ Domain Containing Family, Member 1 (GIPC1) Antibody

Catalogue No.: abx028586



GIPC1 is a scaffolding protein that regulates cell surface receptor expression and trafficking (Lee et al., 2008 [PubMed 18775991]).

Target:	GIPC PDZ Domain Containing Family, Member 1 (GIPC1)
Clonality:	Polyclonal
Reactivity:	Human, Mouse, Rat
Tested Applications:	ELISA, WB, IHC, FCM
Host:	Rabbit
Recommended dilutions:	WB: 1/2000, IHC-P: 1/500, FCM: 1/25. Not tested in IHC-F. Optimal dilutions/concentrations should be determined by the end user.
Conjugation:	Unconjugated
Immunogen:	KLH-conjugated synthetic peptide between 52-81 amino acids from the N-terminal region of human GIPC1.
Isotype:	IgG
Form:	Liquid

Datasheet

Version: 3.0.0
Revision date: 25 Jun 2025



Purification:	Purified through a protein A column, followed by peptide affinity purification.
Storage:	Aliquot and store at -20°C. Avoid repeated freeze/thaw cycles.
UniProt Primary AC:	O14908 (UniProt , ExPASy)
Gene Symbol:	GIPC1
KEGG:	hsa:10755
String:	9606.ENSP00000376753
Molecular Weight:	Calculated MW: 36 kDa
Buffer:	PBS containing 0.09% sodium azide.
Note:	THIS PRODUCT IS FOR RESEARCH USE ONLY. NOT FOR USE IN DIAGNOSTIC, THERAPEUTIC OR COSMETIC PROCEDURES. NOT FOR HUMAN OR ANIMAL CONSUMPTION.

For Reference Only