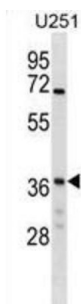


## NSF Attachment Protein Gamma (NAPG) Antibody

Catalogue No.: abx028620



This gene encodes soluble NSF attachment protein gamma. The soluble NSF attachment proteins (SNAPs) enable N-ethylmaleimide-sensitive fusion protein (NSF) to bind to target membranes. NSF and SNAPs appear to be general components of the intracellular membrane fusion apparatus, and their action at specific sites of fusion must be controlled by SNAP receptors particular to the membranes being fused. The product of this gene mediates platelet exocytosis and controls the membrane fusion events of this process.

|                               |   |
|-------------------------------|---|
| <b>Target:</b>                | NSF Attachment Protein Gamma (NAPG)   |
| <b>Clonality:</b>             | Polyclonal  |
| <b>Reactivity:</b>            | Human   |
| <b>Tested Applications:</b>   | ELISA, WB   |
| <b>Host:</b>                  | Rabbit  |
| <b>Recommended dilutions:</b> | WB: 1/1000. Optimal dilutions/concentrations should be determined by the end user.                  |
| <b>Conjugation:</b>           | Unconjugated  |
| <b>Immunogen:</b>             | KLH-conjugated synthetic peptide between 162-190 amino acids from the Central region of human NAPG. |
| <b>Isotype:</b>               | IgG   |
| <b>Form:</b>                  | Liquid  |
| <b>Purification:</b>          | Purified through a protein A column, followed by peptide affinity purification.                     |
| <b>Storage:</b>               | Aliquot and store at -20°C. Avoid repeated freeze/thaw cycles.                                      |
| <b>UniProt Primary AC:</b>    | Q99747 ( <a href="#">UniProt</a> , <a href="#">ExPASy</a> )   |

# Datasheet

Version: 3.0.0

Revision date: 28 Aug 2025



|                          |  |
|--------------------------|--|
| <b>Gene Symbol:</b>      | NAPG   |
| <b>KEGG:</b>             | hsa:8774   |
| <b>String:</b>           | <a href="#">9606.ENSP00000324628</a>   |
| <b>Molecular Weight:</b> | Calculated MW: 34.7 kDa  |
| <b>Buffer:</b>           | PBS containing 0.09% sodium azide.   |
| <b>Specificity:</b>      | Predicted to react with Mouse and Cow NAPG.  |
| <b>Note:</b>             | THIS PRODUCT IS FOR RESEARCH USE ONLY. NOT FOR USE IN DIAGNOSTIC, THERAPEUTIC OR COSMETIC PROCEDURES. NOT FOR HUMAN OR ANIMAL CONSUMPTION. |

For Reference Only