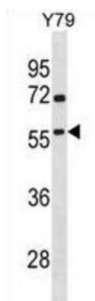


# TATA-Box Binding Protein Associated Factor, RNA Polymerase I Subunit A (TAF1A) Antibody

Catalogue No.: abx028625



Initiation of transcription by RNA polymerase I requires the formation of a complex composed of the TATA-binding protein (TBP) and three TBP-associated factors (TAFs) specific for RNA polymerase I. This complex, known as SL1, binds to the core promoter of ribosomal RNA genes to position the polymerase properly and acts as a channel for regulatory signals. This gene encodes the smallest SL1-specific TAF. Two transcripts encoding different isoforms have been identified.

<b>Target:</b>	TATA-Box Binding Protein Associated Factor, RNA Polymerase I Subunit A (TAF1A)
<b>Clonality:</b>	Polyclonal
<b>Reactivity:</b>	Human
<b>Tested Applications:</b>	ELISA, WB
<b>Host:</b>	Rabbit
<b>Recommended dilutions:</b>	WB: 1/1000. Optimal dilutions/concentrations should be determined by the end user.
<b>Conjugation:</b>	Unconjugated
<b>Immunogen:</b>	KLH-conjugated synthetic peptide between 68-97 amino acids from the N-terminal region of human TAF1A.
<b>Isotype:</b>	IgG
<b>Form:</b>	Liquid
<b>Purification:</b>	Purified through a protein A column, followed by peptide affinity purification.
<b>Storage:</b>	Aliquot and store at -20°C. Avoid repeated freeze/thaw cycles.
<b>UniProt Primary AC:</b>	Q15573 ( <a href="#">UniProt</a> , <a href="#">ExPASy</a> )

# Datasheet

Version: 3.0.0

Revision date: 05 Mar 2025



**KEGG:** hsa:9015

**String:** [9606.ENSP00000339976](#)

**Molecular Weight:** Calculated MW: 52.7 kDa

**Buffer:** PBS containing 0.09% sodium azide.

**Note:** THIS PRODUCT IS FOR RESEARCH USE ONLY. NOT FOR USE IN DIAGNOSTIC, THERAPEUTIC OR COSMETIC PROCEDURES. NOT FOR HUMAN OR ANIMAL CONSUMPTION.

For Reference Only