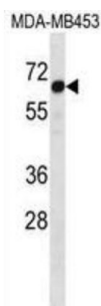


STEAP3 Metalloreductase (STEAP3) Antibody

Catalogue No.: abx028683



Endosomal ferrireductase required for efficient transferrin-dependent iron uptake in erythroid cells. Participates in erythroid iron homeostasis by reducing Fe (3+) to Fe (2+). Can also reduce of Cu (2+) to Cu (1+), suggesting that it participates in copper homeostasis. Uses NAD (+) as acceptor (By similarity). May play a role downstream of p53/TP53 to interface apoptosis and cell cycle progression. Indirectly involved in exosome secretion by facilitating the secretion of proteins such as TCTP.

Target: STEAP3 Metalloreductase (STEAP3)

Clonality: Polyclonal

Reactivity: Human

Tested Applications: ELISA, WB

Host: Rabbit

Recommended dilutions: WB: 1/1000. Optimal dilutions/concentrations should be determined by the end user.

Conjugation: Unconjugated

Immunogen: KLH-conjugated synthetic peptide between 441-470 amino acids from the C-terminal region of human STEAP3.

Isotype: IgG

Form: Liquid

Purification: Purified through a protein A column, followed by peptide affinity purification.

Storage: Aliquot and store at -20°C. Avoid repeated freeze/thaw cycles.

UniProt Primary AC: Q658P3 ([UniProt](#), [ExPASy](#))

KEGG: hsa:55240

Datasheet

Version: 2.0.0

Revision date: 13 Sep 2025



String: [9606.ENSF00000376822](#)

Molecular Weight: Calculated MW: 54.6 kDa

Buffer: PBS containing 0.09% sodium azide.

Note: THIS PRODUCT IS FOR RESEARCH USE ONLY. NOT FOR USE IN DIAGNOSTIC, THERAPEUTIC OR COSMETIC PROCEDURES. NOT FOR HUMAN OR ANIMAL CONSUMPTION.

For Reference Only