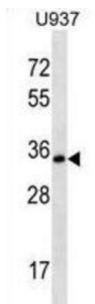


Syntaxin 12 (STX12) Antibody

Catalogue No.: abx028692



SNARE that acts to regulate protein transport between late endosomes and the trans-Golgi network (By similarity).

Target: Syntaxin 12 (STX12)

Clonality: Polyclonal

Reactivity: Human

Tested Applications: ELISA, WB

Host: Rabbit

Recommended dilutions: WB: 1/1000. Optimal dilutions/concentrations should be determined by the end user.

Conjugation: Unconjugated

Immunogen: KLH-conjugated synthetic peptide between 224-251 amino acids from the C-terminal region of human STX12.

Isotype: IgG

Form: Liquid

Purification: Purified through a protein A column, followed by peptide affinity purification.

Storage: Aliquot and store at -20°C. Avoid repeated freeze/thaw cycles.

UniProt Primary AC: Q86Y82 ([UniProt](#), [ExPASy](#))

Gene Symbol: STX12

KEGG: hsa:23673

Datasheet

Version: 4.0.0

Revision date: 01 May 2025



String: [9606.ENSF00000363054](#)

Molecular Weight: Calculated MW: 31.6 kDa

Buffer: PBS containing 0.09% sodium azide.

Specificity: Predicted to react with Mouse and Rat STX12.

Note: THIS PRODUCT IS FOR RESEARCH USE ONLY. NOT FOR USE IN DIAGNOSTIC, THERAPEUTIC OR COSMETIC PROCEDURES. NOT FOR HUMAN OR ANIMAL CONSUMPTION.

For Reference Only