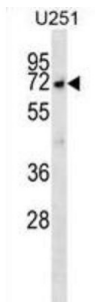


## McKusick-Kaufman/Bardet-Biedl Syndromes Putative Chaperonin (MKKS) Antibody

Catalogue No.: abx028718



MKKS is a protein with sequence similarity to the chaperonin family. The encoded protein may have a role in protein processing in limb, cardiac and reproductive system development. Mutations in this gene have been observed in patients with Bardet-Biedl syndrome type 6 and McKusick-Kaufman syndrome. Two transcript variants encoding the same protein have been identified for this gene.

<b>Target:</b>	McKusick-Kaufman/Bardet-Biedl Syndromes Putative Chaperonin (MKKS)
<b>Clonality:</b>	Polyclonal
<b>Reactivity:</b>	Human
<b>Tested Applications:</b>	ELISA, WB
<b>Host:</b>	Rabbit
<b>Recommended dilutions:</b>	WB: 1/1000. Optimal dilutions/concentrations should be determined by the end user.
<b>Conjugation:</b>	Unconjugated
<b>Immunogen:</b>	KLH-conjugated synthetic peptide between 408-437 amino acids from the C-terminal region of human MKKS.
<b>Isotype:</b>	IgG
<b>Form:</b>	Liquid
<b>Purification:</b>	Purified through a protein A column, followed by peptide affinity purification.
<b>Storage:</b>	Aliquot and store at -20°C. Avoid repeated freeze/thaw cycles.
<b>UniProt Primary AC:</b>	Q9NPJ1 ( <a href="#">UniProt</a> , <a href="#">ExPASy</a> )

# Datasheet

Version: 2.0.0

Revision date: 12 Sep 2025



**Gene Symbol:** MKKS

**String:** [9606.ENSP00000246062](#)

**Molecular Weight:** Calculated MW: 62.3 kDa

**Buffer:** PBS containing 0.09% sodium azide.

**Note:** THIS PRODUCT IS FOR RESEARCH USE ONLY. NOT FOR USE IN DIAGNOSTIC, THERAPEUTIC OR COSMETIC PROCEDURES. NOT FOR HUMAN OR ANIMAL CONSUMPTION.

For Reference Only