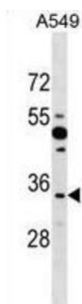


Protein Boule-Like (BOLL) Antibody

Catalogue No.: abx028743



BOLL belongs to the DAZ gene family required for germ cell development. It encodes an RNA-binding protein which is more similar to Drosophila Boule than to human proteins encoded by genes DAZ (deleted in azoospermia) or DAZL (deleted in azoospermia-like). Loss of this gene function results in the absence of sperm in semen (azoospermia). Histological studies demonstrated that the primary defect is at the meiotic G2/M transition.

Target: Protein Boule-Like (BOLL)

Clonality: Polyclonal

Reactivity: Human

Tested Applications: ELISA, WB

Host: Rabbit

Recommended dilutions: WB: 1/1000. Optimal dilutions/concentrations should be determined by the end user.

Conjugation: Unconjugated

Immunogen: KLH-conjugated synthetic peptide between 23-51 amino acids from the N-terminal region of human BOLL.

Isotype: IgG

Form: Liquid

Purification: Purified through a protein A column, followed by peptide affinity purification.

Storage: Aliquot and store at -20°C. Avoid repeated freeze/thaw cycles.

UniProt Primary AC: Q8N9W6 ([UniProt](#), [ExPASy](#))

Gene Symbol: BOLL

Datasheet

Version: 6.0.0

Revision date: 15 Aug 2025



KEGG: hsa:66037

String: [9606.ENSP00000314792](#)

Molecular Weight: Calculated MW: 31.3 kDa

Buffer: PBS containing 0.09% sodium azide.

Specificity: Predicted to react with Monkey BOLL.

Note: THIS PRODUCT IS FOR RESEARCH USE ONLY. NOT FOR USE IN DIAGNOSTIC, THERAPEUTIC OR COSMETIC PROCEDURES. NOT FOR HUMAN OR ANIMAL CONSUMPTION.

For Reference Only