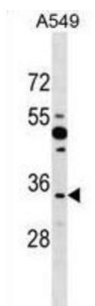


## Protein Boule-Like (BOLL) Antibody

Catalogue No.: abx028743



BOLL belongs to the DAZ gene family required for germ cell development. It encodes an RNA-binding protein which is more similar to Drosophila Boule than to human proteins encoded by genes DAZ (deleted in azoospermia) or DAZL (deleted in azoospermia-like). Loss of this gene function results in the absence of sperm in semen (azoospermia). Histological studies demonstrated that the primary defect is at the meiotic G2/M transition.

**Target:** Protein Boule-Like (BOLL)

**Clonality:** Polyclonal

**Reactivity:** Human

**Tested Applications:** ELISA, WB

**Host:** Rabbit

**Recommended dilutions:** WB: 1/1000. Optimal dilutions/concentrations should be determined by the end user.

**Conjugation:** Unconjugated

**Immunogen:** KLH-conjugated synthetic peptide between 23-51 amino acids from the N-terminal region of human BOLL.

**Isotype:** IgG

**Form:** Liquid

**Purification:** Purified through a protein A column, followed by peptide affinity purification.

**Storage:** Aliquot and store at -20°C. Avoid repeated freeze/thaw cycles.

**UniProt Primary AC:** Q8N9W6 ([UniProt](#), [ExPASy](#))

**Gene Symbol:** BOLL

# Datasheet

Version: 6.0.0

Revision date: 05 Mar 2025



**KEGG:** hsa:66037

**String:** [9606.ENSP00000314792](#)

**Molecular Weight:** Calculated MW: 31.3 kDa

**Buffer:** PBS containing 0.09% sodium azide.

**Specificity:** Predicted to react with Monkey BOLL.

**Note:** THIS PRODUCT IS FOR RESEARCH USE ONLY. NOT FOR USE IN DIAGNOSTIC, THERAPEUTIC OR COSMETIC PROCEDURES. NOT FOR HUMAN OR ANIMAL CONSUMPTION.

For Reference Only