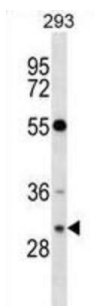


## GTP-Binding Protein Rhes (RASD2) Antibody

Catalogue No.: abx028744



RASD2 is a Ras-related protein that enriched in striatum. The product of this gene binds to GTP and possesses intrinsic GTPase activity. The gene belongs to the Ras superfamily of small GTPases. The exact function of this gene is unknown, but most striatum-specific mRNAs characterized to date encode components of signal transduction cascades.

**Target:** GTP-Binding Protein Rhes (RASD2)

**Clonality:** Polyclonal

**Reactivity:** Human

**Tested Applications:** ELISA, WB

**Host:** Rabbit

**Recommended dilutions:** WB: 1/1000. Optimal dilutions/concentrations should be determined by the end user.

**Conjugation:** Unconjugated

**Immunogen:** KLH-conjugated synthetic peptide between 86-114 amino acids from the Central region of human RASD2.

**Isotype:** IgG

**Form:** Liquid

**Purification:** Purified through a protein A column, followed by peptide affinity purification.

**Storage:** Aliquot and store at -20°C. Avoid repeated freeze/thaw cycles.

**UniProt Primary AC:** Q96D21 ([UniProt](#), [ExPASy](#))

**Gene Symbol:** RASD2

# Datasheet

Version: 4.0.0

Revision date: 21 Aug 2025



**GeneID:** [23551](#)

**OMIM:** [612842](#)

**KEGG:** hsa:23551

**String:** [9606.ENSP00000216127](#)

**Molecular Weight:** Calculated MW: 30.4 kDa

**Buffer:** PBS containing 0.09% sodium azide.

**Note:** THIS PRODUCT IS FOR RESEARCH USE ONLY. NOT FOR USE IN DIAGNOSTIC, THERAPEUTIC OR COSMETIC PROCEDURES. NOT FOR HUMAN OR ANIMAL CONSUMPTION.

For Reference Only