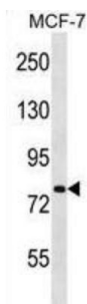


Solute Carrier Family 24 Member 3 (SLC24A3) Antibody

Catalogue No.: abx028784



Plasma membrane sodium/calcium exchangers are an important component of intracellular calcium homeostasis and electrical conduction. Potassium-dependent sodium/calcium exchangers such as SLC24A3 are believed to transport 1 intracellular calcium and 1 potassium ion in exchange for 4 extracellular sodium ions (Kraev et al., 2001 [PubMed 11294880]).

Target: Solute Carrier Family 24 Member 3 (SLC24A3)

Clonality: Polyclonal

Reactivity: Human

Tested Applications: ELISA, WB

Host: Rabbit

Recommended dilutions: WB: 1/1000. Optimal dilutions/concentrations should be determined by the end user.

Conjugation: Unconjugated

Immunogen: KLH-conjugated synthetic peptide between 79-108 amino acids from the N-terminal region of human SLC24A3.

Isotype: IgG

Form: Liquid

Purification: Purified through a protein A column, followed by peptide affinity purification.

Storage: Aliquot and store at -20°C. Avoid repeated freeze/thaw cycles.

UniProt Primary AC: Q9HC58 ([UniProt](#), [ExPASy](#))

Gene Symbol: SLC24A3

Datasheet

Version: 5.0.0

Revision date: 09 Sep 2025



String: [9606.ENSF00000333519](#)

Molecular Weight: Calculated MW: 72 kDa

Buffer: PBS containing 0.09% sodium azide.

Note: THIS PRODUCT IS FOR RESEARCH USE ONLY. NOT FOR USE IN DIAGNOSTIC, THERAPEUTIC OR COSMETIC PROCEDURES. NOT FOR HUMAN OR ANIMAL CONSUMPTION.

For Reference Only