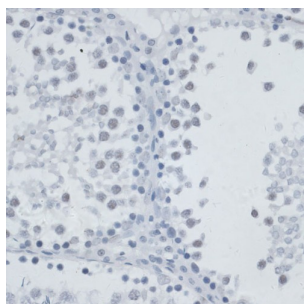
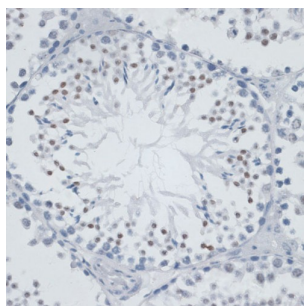


G/T Mismatch-Binding Protein (MSH6) Antibody

Catalogue No.: abx002279



Immunohistochemistry of paraffin-embedded Rat testis using MSH6 Antibody (1/100 dilution, 40x lens).



Immunohistochemistry of paraffin-embedded Mouse testis using MSH6 Antibody (1/100 dilution, 40x lens).

MSH6 Antibody is a Rabbit Polyclonal antibody against MSH6. This gene encodes a protein similar to the MutS protein. In *E. coli*, the MutS protein helps in the recognition of mismatched nucleotides, prior to their repair. A highly conserved region of approximately 150 aa, called the Walker-A adenine nucleotide binding motif, exists in MutS homologs. The encoded protein of this gene combines with MSH2 to form a mismatch recognition complex that functions as a bidirectional molecular switch that exchanges ADP and ATP as DNA mismatches are bound and dissociated. Mutations in this gene have been identified in individuals with hereditary nonpolyposis colon cancer (HNPCC) and endometrial cancer.

Target: G/T Mismatch-Binding Protein (MSH6)

Clonality: Polyclonal

Reactivity: Human, Mouse, Rat

Tested Applications: IHC

Host: Rabbit

Recommended dilutions: IHC-P: 1/50 - 1/200. Not tested in IHC-F. Optimal dilutions/concentrations should be determined by the end user.

Conjugation: Unconjugated

Immunogen: Recombinant fusion protein corresponding to human MSH6

Isotype: IgG

Datasheet

Version: 4.0.0

Revision date: 17 Aug 2025



Form:	Liquid
Purification:	Purified by affinity chromatography.
Storage:	Aliquot and store at -20°C. Avoid repeated freeze/thaw cycles.
UniProt Primary AC:	P52701 (UniProt , ExPASy)
Gene Symbol:	MSH6
GeneID:	2956
KEGG:	hsa:2956
String:	9606.ENSP00000234420
Buffer:	PBS, pH 7.3, containing 0.02% sodium azide, 50% glycerol.
Concentration:	1 mg/ml
Note:	THIS PRODUCT IS FOR RESEARCH USE ONLY. NOT FOR USE IN DIAGNOSTIC, THERAPEUTIC OR COSMETIC PROCEDURES. NOT FOR HUMAN OR ANIMAL CONSUMPTION.

For Reference Only