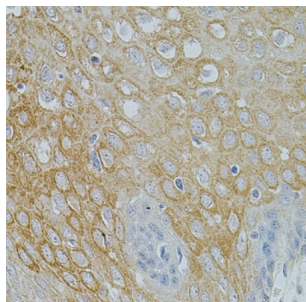
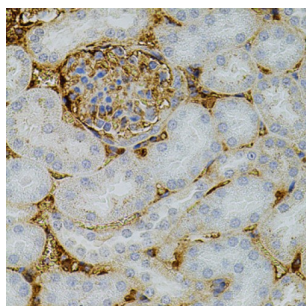


Neurotrophin-3 (NTF3) Antibody

Catalogue No.: abx002281



Immunohistochemistry of paraffin-embedded Human esophagus using NTF3 Antibody (1/100 dilution, 40x lens).



Immunohistochemistry of paraffin-embedded Mouse kidney using NTF3 Antibody (1/100 dilution, 40x lens).

NTF3 Antibody is a Rabbit Polyclonal antibody against NTF3. The protein encoded by this gene is a member of the neurotrophin family, that controls survival and differentiation of mammalian neurons. This protein is closely related to both nerve growth factor and brain-derived neurotrophic factor. It may be involved in the maintenance of the adult nervous system, and may affect development of neurons in the embryo when it is expressed in human placenta. NTF3-deficient mice generated by gene targeting display severe movement defects of the limbs. The mature peptide of this protein is identical in all mammals examined including human, pig, rat and mouse.

Target: Neurotrophin-3 (NTF3)

Research Area: Cytokines, Neuroscience

Clonality: Polyclonal

Reactivity: Human, Mouse

Tested Applications: IHC

Host: Rabbit

Recommended dilutions: IHC-P: 1/100 - 1/200. Not tested in IHC-F. Optimal dilutions/concentrations should be determined by the end user.

Conjugation: Unconjugated

Immunogen: Recombinant protein corresponding to human NTF3

Datasheet

Version: 3.0.0

Revision date: 13 Sep 2025



Isotype:	IgG
Form:	Liquid
Purification:	Purified by affinity chromatography.
Storage:	Aliquot and store at -20°C. Avoid repeated freeze/thaw cycles.
UniProt Primary AC:	P20783 (UniProt , ExPASy)
Gene Symbol:	NTF3
GeneID:	4908
NCBI Accession:	NP_002518.1
KEGG:	hsa:4908
String:	9606.ENSP00000397297
Buffer:	PBS, pH 7.3, containing 0.02% sodium azide, 50% glycerol.
Concentration:	1 mg/ml
Note:	THIS PRODUCT IS FOR RESEARCH USE ONLY. NOT FOR USE IN DIAGNOSTIC, THERAPEUTIC OR COSMETIC PROCEDURES. NOT FOR HUMAN OR ANIMAL CONSUMPTION.