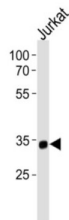


snRNA-Activating Protein Complex Subunit 2 (SNAPC2) Antibody

Catalogue No.: abx028811



SNAPC2 is a subunit of the snRNA-activating protein complex which is associated with the TATA box-binding protein. The encoded protein is necessary for RNA polymerase II and III dependent small-nuclear RNA gene transcription. Alternative splicing results in multiple transcript variants. [provided by RefSeq].

Target:	snRNA-Activating Protein Complex Subunit 2 (SNAPC2)
Clonality:	Polyclonal
Reactivity:	Human
Tested Applications:	ELISA, WB
Host:	Rabbit
Recommended dilutions:	WB: 1/1000. Optimal dilutions/concentrations should be determined by the end user.
Conjugation:	Unconjugated
Immunogen:	KLH-conjugated synthetic peptide between 278-307 amino acids from the C-terminal region of human SNAPC2.
Isotype:	IgG
Form:	Liquid
Purification:	Purified through a protein A column, followed by peptide affinity purification.
Storage:	Aliquot and store at -20°C. Avoid repeated freeze/thaw cycles.
UniProt Primary AC:	Q13487 (UniProt , ExPASy)
NCBI Accession:	NP_003074.1

Datasheet

Version: 3.0.0

Revision date: 06 Mar 2025



KEGG: hsa:6618

String: [9606.ENSP00000221573](#)

Molecular Weight: Calculated MW: 35.6 kDa

Buffer: PBS containing 0.09% sodium azide.

Note: THIS PRODUCT IS FOR RESEARCH USE ONLY. NOT FOR USE IN DIAGNOSTIC, THERAPEUTIC OR COSMETIC PROCEDURES. NOT FOR HUMAN OR ANIMAL CONSUMPTION.

For Reference Only