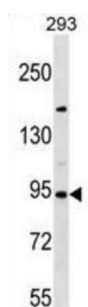


Semaphorin 3D (SEMA3D) Antibody

Catalogue No.: abx028823



Induces the collapse and paralysis of neuronal growth cones. Could potentially act as repulsive cues toward specific neuronal populations. Binds to neuropilin (By similarity).

Target: Semaphorin 3D (SEMA3D)

Clonality: Polyclonal

Reactivity: Human

Tested Applications: ELISA, WB

Host: Rabbit

Recommended dilutions: WB: 1/1000. Optimal dilutions/concentrations should be determined by the end user.

Conjugation: Unconjugated

Immunogen: KLH-conjugated synthetic peptide between 611-640 amino acids from the C-terminal region of human SEMA3D.

Isotype: IgG

Form: Liquid

Purification: Purified through a protein A column, followed by peptide affinity purification.

Storage: Aliquot and store at -20°C. Avoid repeated freeze/thaw cycles.

UniProt Primary AC: O95025 ([UniProt](#), [ExPASy](#))

Gene Symbol: SEMA3D

Datasheet

Version: 3.0.0

Revision date: 06 Mar 2025



KEGG: hsa:223117

String: [9606.ENSP00000284136](#)

Molecular Weight: Calculated MW: 89.7 kDa

Buffer: PBS containing 0.09% sodium azide.

Specificity: Predicted to react with Mouse SEMA3D.

Note: THIS PRODUCT IS FOR RESEARCH USE ONLY. NOT FOR USE IN DIAGNOSTIC, THERAPEUTIC OR COSMETIC PROCEDURES. NOT FOR HUMAN OR ANIMAL CONSUMPTION.

For Reference Only