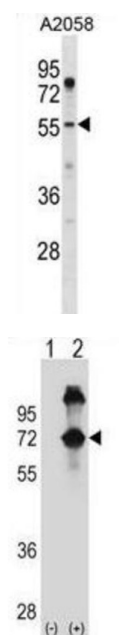


Tether Containing UBX Domain for GLUT4 / TUG (ASPSCR1) Antibody

Catalogue No.: abx028859



This gene is a candidate gene for alveolar soft part sarcoma (ASPS). It has been found that this gene is fused with transcription factor TFE3 gene in ASPS and also in renal cell carcinomas. Several alternatively spliced transcript variants of this gene have been described, but their full length nature has not been determined.

Target: Tether Containing UBX Domain for GLUT4 / TUG (ASPSCR1)

Clonality: Polyclonal

Reactivity: Human

Tested Applications: ELISA, WB

Host: Rabbit

Recommended dilutions: WB: 1/1000. Optimal dilutions/concentrations should be determined by the end user.

Conjugation: Unconjugated

Immunogen: KLH-conjugated synthetic peptide between 65-93 amino acids from the N-terminal region of human ASPSCR1.

Isotype: IgG

Form: Liquid

Datasheet

Version: 3.0.0
Revision date: 29 Jun 2025



Purification:	Purified through a protein A column, followed by peptide affinity purification.
Storage:	Aliquot and store at -20°C. Avoid repeated freeze/thaw cycles.
UniProt Primary AC:	Q9BZE9 (UniProt , ExPASy)
Gene Symbol:	ASPSCR1
String:	9606.ENSP00000306625
Molecular Weight:	Calculated MW: 60.2 kDa
Buffer:	PBS containing 0.09% sodium azide.
Note:	THIS PRODUCT IS FOR RESEARCH USE ONLY. NOT FOR USE IN DIAGNOSTIC, THERAPEUTIC OR COSMETIC PROCEDURES. NOT FOR HUMAN OR ANIMAL CONSUMPTION.

For Reference Only