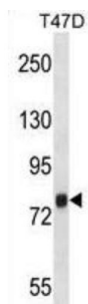


Zinc Finger CCCH Domain-Containing Protein 14 (ZC3H14) Antibody

Catalogue No.: abx028865



ZC3H14 belongs to a family of poly (A) binding proteins that influence gene expression by regulating mRNA stability, nuclear export, and translation (Kelly et al., 2007 [PubMed 17630287]).

Target:	Zinc Finger CCCH Domain-Containing Protein 14 (ZC3H14)
Clonality:	Polyclonal
Reactivity:	Human
Tested Applications:	ELISA, WB
Host:	Rabbit
Recommended dilutions:	WB: 1/1000. Optimal dilutions/concentrations should be determined by the end user.
Conjugation:	Unconjugated
Immunogen:	KLH-conjugated synthetic peptide between 401-429 amino acids from the Central region of human ZC3H14.
Isotype:	IgG
Form:	Liquid
Purification:	Purified through a protein A column, followed by peptide affinity purification.
Storage:	Aliquot and store at -20°C. Avoid repeated freeze/thaw cycles.
UniProt Primary AC:	Q6PJT7 (UniProt , ExPASy)
Gene Symbol:	ZC3H14

Datasheet

Version: 4.0.0

Revision date: 22 Aug 2025



KEGG: hsa:79882

String: [9606.ENSP00000251038](#)

Molecular Weight: Calculated MW: 82.9 kDa

Buffer: PBS containing 0.09% sodium azide.

Specificity: Predicted to react with Monkey ZC3H14.

Note: THIS PRODUCT IS FOR RESEARCH USE ONLY. NOT FOR USE IN DIAGNOSTIC, THERAPEUTIC OR COSMETIC PROCEDURES. NOT FOR HUMAN OR ANIMAL CONSUMPTION.

For Reference Only