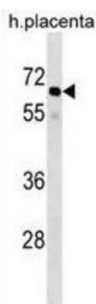


Grainyhead-Like Protein 3 Homolog (GRHL3) Antibody

Catalogue No.: abx028874



This gene encodes a member of the grainyhead family of transcription factors. The encoded protein may function as a transcription factor during development, and has been shown to stimulate migration of endothelial cells. Multiple transcript variants encoding distinct isoforms have been identified for this gene.

Target:	Grainyhead-Like Protein 3 Homolog (GRHL3)
Clonality:	Polyclonal
Reactivity:	Human
Tested Applications:	ELISA, WB
Host:	Rabbit
Recommended dilutions:	WB: 1/1000. Optimal dilutions/concentrations should be determined by the end user.
Conjugation:	Unconjugated
Immunogen:	KLH-conjugated synthetic peptide between 1-30 amino acids from the N-terminal region of human GRHL3.
Isotype:	IgG
Form:	Liquid
Purification:	Purified through a protein A column, followed by peptide affinity purification.
Storage:	Aliquot and store at -20°C. Avoid repeated freeze/thaw cycles.
UniProt Primary AC:	Q8TE85 (UniProt , ExPASy)
Gene Symbol:	GRHL3

Datasheet

Version: 2.0.0

Revision date: 22 Jul 2025



KEGG: hsa:57822

String: [9606.ENSP00000288955](#)

Molecular Weight: Calculated MW: 70.3 kDa

Buffer: PBS containing 0.09% sodium azide.

Note: THIS PRODUCT IS FOR RESEARCH USE ONLY. NOT FOR USE IN DIAGNOSTIC, THERAPEUTIC OR COSMETIC PROCEDURES. NOT FOR HUMAN OR ANIMAL CONSUMPTION.

For Reference Only