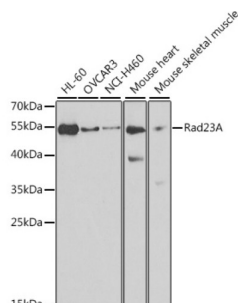


RAD23 Homolog A, Nucleotide Excision Repair Protein (RAD23A) Antibody

Catalogue No.: abx002288



Western blot analysis of extracts of various cell lines using Rad23A Antibody (1/1000 dilution).

RAD23A Antibody is a Rabbit Polyclonal antibody against RAD23A. The protein encoded by this gene is one of two human homologs of *Saccharomyces cerevisiae* Rad23, a protein involved in nucleotide excision repair. Proteins in this family have a modular domain structure consisting of an ubiquitin-like domain (UbL), ubiquitin-associated domain 1 (UbA1), XPC-binding domain and UbA2. The protein encoded by this gene plays an important role in nucleotide excision repair and also in delivery of polyubiquitinated proteins to the proteasome. Alternative splicing results in multiple transcript variants encoding multiple isoforms.

Target: RAD23 Homolog A, Nucleotide Excision Repair Protein (RAD23A)

Clonality: Polyclonal

Reactivity: Human

Tested Applications: WB

Host: Rabbit

Recommended dilutions: WB: 1/500 - 1/2000. Optimal dilutions/concentrations should be determined by the end user.

Conjugation: Unconjugated

Immunogen: Recombinant fusion protein corresponding to human Rad23A

Isotype: IgG

Form: Liquid

Purification: Purified by affinity chromatography.

Storage: Aliquot and store at -20°C. Avoid repeated freeze/thaw cycles.

Datasheet

Version: 4.0.0

Revision date: 27 Aug 2025



UniProt Primary AC: P54725 ([UniProt](#), [ExPASy](#))

Gene Symbol: RAD23A

GeneID: [5886](#)

NCBI Accession: NP_005044.1

KEGG: hsa:5886

String: [9606.ENSP00000467024](#)

Molecular Weight: Calculated MW: 33 kDa/39 kDa

Buffer: PBS, pH 7.3, containing 0.02% sodium azide, 50% glycerol.

Concentration: 1 mg/ml

Note: THIS PRODUCT IS FOR RESEARCH USE ONLY. NOT FOR USE IN DIAGNOSTIC, THERAPEUTIC OR COSMETIC PROCEDURES. NOT FOR HUMAN OR ANIMAL CONSUMPTION.

For Reference Only