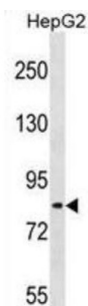
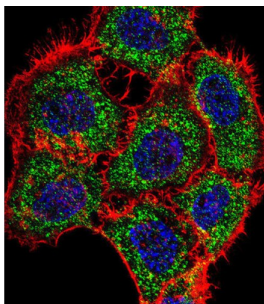


TSC22 Domain Family Protein 2 (TSC22D2) Antibody

Catalogue No.: abx028878



WB analysis of HepG2 cell lysates.



IF analysis of A431 cells, using TSC22D2 antibody (1/25 dilution) and AF488-conjugated donkey anti-rabbit secondary antibody (1/400 dilution).

TSC22D2 belongs to the TSC-22/Dip/Bun family and the function remains unknown.

Target:	TSC22 Domain Family Protein 2 (TSC22D2)
Clonality:	Polyclonal
Reactivity:	Human
Tested Applications:	ELISA, WB, IF/ICC
Host:	Rabbit
Recommended dilutions:	WB: 1/1000, IF/ICC: 1/10 - 1/50. Optimal dilutions/concentrations should be determined by the end user.
Conjugation:	Unconjugated
Immunogen:	KLH-conjugated synthetic peptide between 34-62 amino acids from the N-terminal region of human TSC22D2.
Isotype:	IgG
Form:	Liquid
Purification:	Purified through a protein A column, followed by peptide affinity purification.

Datasheet

Version: 4.0.0

Revision date: 29 Aug 2025



Storage: Aliquot and store at -20°C. Avoid repeated freeze/thaw cycles.

UniProt Primary AC: O75157 ([UniProt](#), [ExPASy](#))

Gene Symbol: TSC22D2

KEGG: hsa:9819

String: [9606.ENSP00000354543](#)

Molecular Weight: Calculated MW: 79.2 kDa

Buffer: PBS containing 0.09% sodium azide.

Note: THIS PRODUCT IS FOR RESEARCH USE ONLY. NOT FOR USE IN DIAGNOSTIC, THERAPEUTIC OR COSMETIC PROCEDURES. NOT FOR HUMAN OR ANIMAL CONSUMPTION.

For Reference Only