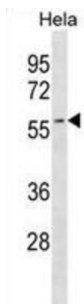


Ancient Ubiquitous Protein 1 (AUP1) Antibody

Catalogue No.: abx028900



This gene encodes a protein that contains a domain with homology to the ancient conserved region of the archain 1 gene and a domain that may be involved in binding ubiquitin-conjugating enzymes. The protein encoded by this gene has been shown to bind to the conserved membrane-proximal sequence of the cytoplasmic tail of integrin alpha (IIb) subunits. These subunits play a crucial role in the integrin alpha (IIb) beta (3) inside-out signalling in platelets and megakaryocytes that leads to platelet aggregation and thrombus formation. This gene overlaps the gene for mitochondrial serine protease 25.

Target: Ancient Ubiquitous Protein 1 (AUP1)

Clonality: Polyclonal

Reactivity: Human

Tested Applications: ELISA, WB

Host: Rabbit

Recommended dilutions: WB: 1/1000. Optimal dilutions/concentrations should be determined by the end user.

Conjugation: Unconjugated

Immunogen: KLH-conjugated synthetic peptide between 440-468 amino acids from the C-terminal region of human AUP1.

Isotype: IgG

Form: Liquid

Purification: Purified through a protein A column, followed by peptide affinity purification.

Storage: Aliquot and store at -20°C. Avoid repeated freeze/thaw cycles.

UniProt Primary AC: Q9Y679 ([UniProt](#), [ExPASy](#))

Datasheet

Version: 2.0.0

Revision date: 13 Jun 2025



Gene Symbol: AUP1

Molecular Weight: Calculated MW: 45.8 kDa

Buffer: PBS containing 0.09% sodium azide.

Note: THIS PRODUCT IS FOR RESEARCH USE ONLY. NOT FOR USE IN DIAGNOSTIC, THERAPEUTIC OR COSMETIC PROCEDURES. NOT FOR HUMAN OR ANIMAL CONSUMPTION.

For Reference Only