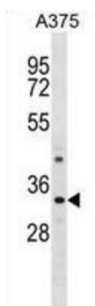


## Proline-Rich Protein 7 (PRR7) Antibody

Catalogue No.: abx028933



Found in a postsynaptic membrane complex with DLG4 and GRIN1. Interacts with DLG4. Interacts preferentially to the PDZ3 domain of DLG4 and to lesser degree to PDZ2 but not to the PDZ1.

**Target:** Proline-Rich Protein 7 (PRR7)

**Clonality:** Polyclonal

**Reactivity:** Human

**Tested Applications:** ELISA, WB

**Host:** Rabbit

**Recommended dilutions:** WB: 1/1000. Optimal dilutions/concentrations should be determined by the end user.

**Conjugation:** Unconjugated

**Immunogen:** KLH-conjugated synthetic peptide between 171-199 amino acids from the C-terminal region of human PRR7.

**Isotype:** IgG

**Form:** Liquid

**Purification:** Purified through a protein A column, followed by peptide affinity purification.

**Storage:** Aliquot and store at -20°C. Avoid repeated freeze/thaw cycles.

**UniProt Primary AC:** Q8TB68 ([UniProt](#), [ExPASy](#))

**Gene Symbol:** PRR7

# Datasheet

Version: 2.0.0

Revision date: 03 Oct 2025



**KEGG:** hsa:80758

**String:** [9606.ENSP00000327168](#)

**Molecular Weight:** Calculated MW: 30.9 kDa

**Buffer:** PBS containing 0.09% sodium azide.

**Specificity:** Predicted to react with Mouse and Rat PRR7.

**Note:** THIS PRODUCT IS FOR RESEARCH USE ONLY. NOT FOR USE IN DIAGNOSTIC, THERAPEUTIC OR COSMETIC PROCEDURES. NOT FOR HUMAN OR ANIMAL CONSUMPTION.

For Reference Only