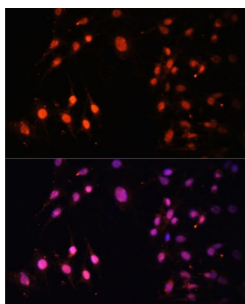
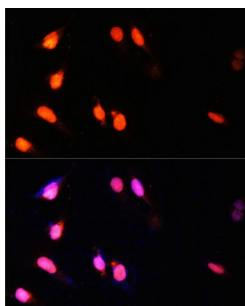


## SET Domain Containing Protein 2 (SETD2) Antibody

Catalogue No.: abx002294



Immunofluorescence analysis of C6 cells using SETD2 Antibody (1/100 dilution, 40x lens).  
Blue: DAPI for nuclear staining.



Immunofluorescence analysis of U-2 OS cells using SETD2 Antibody (1/100 dilution, 40x lens).  
Blue: DAPI for nuclear staining.

SETD2 Antibody is a Rabbit Polyclonal antibody against SETD2. Huntington's disease (HD), a neurodegenerative disorder characterized by loss of striatal neurons, is caused by an expansion of a polyglutamine tract in the HD protein huntingtin. This gene encodes a protein belonging to a class of huntingtin interacting proteins characterized by WW motifs. This protein is a histone methyltransferase that is specific for lysine-36 of histone H3, and methylation of this residue is associated with active chromatin. This protein also contains a novel transcriptional activation domain and has been found associated with hyperphosphorylated RNA polymerase II.

**Target:** SET Domain Containing Protein 2 (SETD2)

**Clonality:** Polyclonal

**Reactivity:** Human, Mouse, Rat

**Tested Applications:** IF/ICC

**Host:** Rabbit

**Recommended dilutions:** IF/ICC: 1/50 - 1/200. Optimal dilutions/concentrations should be determined by the end user.

**Conjugation:** Unconjugated

**Immunogen:** Recombinant fusion protein corresponding to human SETD2

**Isotype:** IgG

# Datasheet

Version: 6.0.0

Revision date: 13 Aug 2025



<b>Form:</b>	Liquid
<b>Purification:</b>	Purified by affinity chromatography.
<b>Storage:</b>	Aliquot and store at -20°C. Avoid repeated freeze/thaw cycles.
<b>UniProt Primary AC:</b>	Q9BYW2 ( <a href="#">UniProt</a> , <a href="#">ExPASy</a> )
<b>Gene Symbol:</b>	SETD2
<b>GeneID:</b>	<a href="#">29072</a>
<b>NCBI Accession:</b>	NP_054878.5
<b>String:</b>	<a href="#">9606.ENSP00000386759</a>
<b>Buffer:</b>	PBS, pH 7.3, containing 0.02% sodium azide, 50% glycerol.
<b>Concentration:</b>	1 mg/ml
<b>Note:</b>	THIS PRODUCT IS FOR RESEARCH USE ONLY. NOT FOR USE IN DIAGNOSTIC, THERAPEUTIC OR COSMETIC PROCEDURES. NOT FOR HUMAN OR ANIMAL CONSUMPTION.