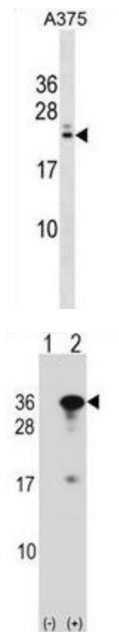


## RING1 And YY1 Binding Protein (RYBP) Antibody

Catalogue No.: abx028949



RYBP may be implicated in the regulation of the transcription as a repressor of the transcriptional activity of E4TF1. In tumor cell lines, may induce apoptosis.

**Target:** RING1 And YY1 Binding Protein (RYBP)

**Clonality:** Polyclonal

**Reactivity:** Human

**Tested Applications:** ELISA, WB

**Host:** Rabbit

**Recommended dilutions:** WB: 1/1000. Optimal dilutions/concentrations should be determined by the end user.

**Conjugation:** Unconjugated

**Immunogen:** KLH-conjugated synthetic peptide between 1-30 amino acids from the N-terminal region of human RYBP.

**Isotype:** IgG

**Form:** Liquid

# Datasheet

Version: 3.0.0  
Revision date: 02 Oct 2025



|                            |  |
|----------------------------|--|
| <b>Purification:</b>       | Purified through a protein A column, followed by peptide affinity purification.  |
| <b>Storage:</b>            | Aliquot and store at -20°C. Avoid repeated freeze/thaw cycles.   |
| <b>UniProt Primary AC:</b> | Q8N488 ( <a href="#">UniProt</a> , <a href="#">ExPASy</a> )  |
| <b>Gene Symbol:</b>        | RYBP   |
| <b>KEGG:</b>               | hsa:23429  |
| <b>String:</b>             | <a href="#">9606.ENSP00000419494</a>   |
| <b>Molecular Weight:</b>   | Calculated MW: 24.8 kDa  |
| <b>Buffer:</b>             | PBS containing 0.09% sodium azide.   |
| <b>Specificity:</b>        | Predicted to react with Mouse RYBP.  |
| <b>Note:</b>               | THIS PRODUCT IS FOR RESEARCH USE ONLY. NOT FOR USE IN DIAGNOSTIC, THERAPEUTIC OR COSMETIC PROCEDURES. NOT FOR HUMAN OR ANIMAL CONSUMPTION. |

For Reference Only