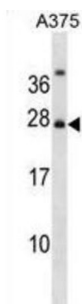


RPA-Interacting Protein (RPAIN) Antibody

Catalogue No.: abx028958



RPAIN mediates the import of RPA complex into the nucleus, possibly via some interaction with importin beta. Isoform 2 is sumoylated and mediates the localization of RPA complex into the PML body of the nucleus, thereby participating in RPA function in DNA metabolism.

Target: RPA-Interacting Protein (RPAIN)

Clonality: Polyclonal

Reactivity: Human

Tested Applications: ELISA, WB

Host: Rabbit

Recommended dilutions: WB: 1/1000. Optimal dilutions/concentrations should be determined by the end user.

Conjugation: Unconjugated

Immunogen: KLH-conjugated synthetic peptide between 16-44 amino acids from the N-terminal region of human RPAIN.

Isotype: IgG

Form: Liquid

Purification: Purified through a protein A column, followed by peptide affinity purification.

Storage: Aliquot and store at -20°C. Avoid repeated freeze/thaw cycles.

UniProt Primary AC: Q86UA6 ([UniProt](#), [ExPASy](#))

Gene Symbol: RPAIN

Datasheet

Version: 4.0.0

Revision date: 25 Aug 2025



KEGG: hsa:84268

String: [9606.ENSP00000385814](#)

Molecular Weight: Calculated MW: 24.8 kDa

Buffer: PBS containing 0.09% sodium azide.

Note: THIS PRODUCT IS FOR RESEARCH USE ONLY. NOT FOR USE IN DIAGNOSTIC, THERAPEUTIC OR COSMETIC PROCEDURES. NOT FOR HUMAN OR ANIMAL CONSUMPTION.

For Reference Only