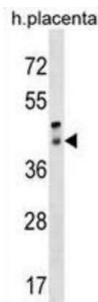


Retinal Pigment Epithelium-Derived Rhodopsin Homolog (RRH) Antibody

Catalogue No.: abx028960



Opsins are members of the guanine nucleotide-binding protein (G protein) coupled receptor superfamily. This gene belongs to the seven-exon subfamily of mammalian opsin genes that includes opsin 5 and retinal G protein coupled receptor. [provided by RefSeq].

Target:	Retinal Pigment Epithelium-Derived Rhodopsin Homolog (RRH)
Clonality:	Polyclonal
Reactivity:	Human
Tested Applications:	ELISA, WB
Host:	Rabbit
Recommended dilutions:	WB: 1/1000. Optimal dilutions/concentrations should be determined by the end user.
Conjugation:	Unconjugated
Immunogen:	KLH-conjugated synthetic peptide between 213-240 amino acids from the C-terminal region of human RRH.
Isotype:	IgG
Form:	Liquid
Purification:	Purified through a protein A column, followed by peptide affinity purification.
Storage:	Aliquot and store at -20°C. Avoid repeated freeze/thaw cycles.
UniProt Primary AC:	O14718 (UniProt , ExPASy)

Datasheet

Version: 2.0.0

Revision date: 13 Aug 2025



Gene Symbol: RRH

KEGG: hsa:10692

String: [9606.ENSP00000314992](#)

Molecular Weight: Calculated MW: 37.4 kDa

Buffer: PBS containing 0.09% sodium azide.

Note: THIS PRODUCT IS FOR RESEARCH USE ONLY. NOT FOR USE IN DIAGNOSTIC, THERAPEUTIC OR COSMETIC PROCEDURES. NOT FOR HUMAN OR ANIMAL CONSUMPTION.

For Reference Only