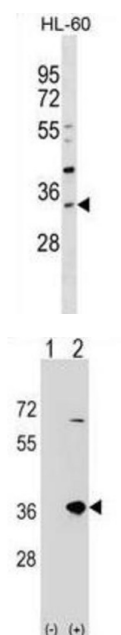


Sulfotransferase Family 1B Member 1 (SULT1B1) Antibody

Catalogue No.: abx028961



Sulfotransferase enzymes catalyze the sulfate conjugation of many hormones, neurotransmitters, drugs, and xenobiotic compounds. These cytosolic enzymes are different in their tissue distributions and substrate specificities. The gene structure (number and length of exons) is similar among family members. However, the total genomic length of this gene is greater than that of other SULT1 genes.

Target: Sulfotransferase Family 1B Member 1 (SULT1B1)

Clonality: Polyclonal

Reactivity: Human

Tested Applications: ELISA, WB

Host: Rabbit

Recommended dilutions: WB: 1/1000. Optimal dilutions/concentrations should be determined by the end user.

Conjugation: Unconjugated

Immunogen: KLH-conjugated synthetic peptide between 191-219 amino acids from the C-terminal region of human SULT1B1.

Isotype: IgG

Form: Liquid

Datasheet

Version: 2.0.0

Revision date: 20 Sep 2025



Purification:	Purified through a protein A column, followed by peptide affinity purification.
Storage:	Aliquot and store at -20°C. Avoid repeated freeze/thaw cycles.
UniProt Primary AC:	O43704 (UniProt , ExPASy)
Gene Symbol:	SULT1B1
KEGG:	hsa:27284
String:	9606.ENSP00000308770
Molecular Weight:	Calculated MW: 34.9 kDa
Buffer:	PBS containing 0.09% sodium azide.
Note:	THIS PRODUCT IS FOR RESEARCH USE ONLY. NOT FOR USE IN DIAGNOSTIC, THERAPEUTIC OR COSMETIC PROCEDURES. NOT FOR HUMAN OR ANIMAL CONSUMPTION.

For Reference Only