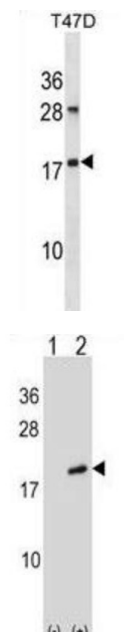


ADP-Ribosylation Factor-Like Protein 2 (ARL2) Antibody

Catalogue No.: abx028964



This gene encodes a small GTP-binding protein of the RAS superfamily which functions as an ADP-ribosylation factor (ARF). The encoded protein is one of a functionally distinct group of ARF-like genes.

Target: ADP-Ribosylation Factor-Like Protein 2 (ARL2)

Clonality: Polyclonal

Reactivity: Human

Tested Applications: ELISA, WB

Host: Rabbit

Recommended dilutions: WB: 1/1000. Optimal dilutions/concentrations should be determined by the end user.

Conjugation: Unconjugated

Immunogen: KLH-conjugated synthetic peptide between 54-82 amino acids from the Central region of human ARL2.

Isotype: IgG

Form: Liquid

Datasheet

Version: 4.0.0

Revision date: 05 Oct 2025



Purification:	Purified through a protein A column, followed by peptide affinity purification.
Storage:	Aliquot and store at -20°C. Avoid repeated freeze/thaw cycles.
UniProt Primary AC:	P36404 (UniProt , ExPASy)
Gene Symbol:	ARL2
KEGG:	hsa:402
String:	9606.ENSP00000246747
Molecular Weight:	Calculated MW: 20.9 kDa
Buffer:	PBS containing 0.09% sodium azide.
Specificity:	Predicted to react with Mouse, Rat, Cow and Drosophila ARL2.
Note:	THIS PRODUCT IS FOR RESEARCH USE ONLY. NOT FOR USE IN DIAGNOSTIC, THERAPEUTIC OR COSMETIC PROCEDURES. NOT FOR HUMAN OR ANIMAL CONSUMPTION.

For Reference Only