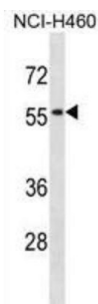


Sialic Acid Binding Ig Like Lectin 5 (SIGLEC5) Antibody

Catalogue No.: abx028965



The sialic acid-binding immunoglobulin-like lectins (SIGLECs), such as SIGLEC5, are a subgroup of the immunoglobulin (Ig) superfamily that mediate protein-carbohydrate interactions. They specifically interact with sialic acids in glycoproteins and glycolipids, with each SIGLEC having a particular preference for both the nature of the sialic acid and its glycosidic linkage to adjacent sugars. SIGLECs have similar structures, including extracellular Ig-like domains composed of an N-terminal V-set domain followed by varying numbers of C2-set domains. It appears that all SIGLECs have an unusual arrangement of conserved cysteine residues in the V-set and adjacent C2-set domains. Most SIGLECs are expressed uniquely within the hematopoietic system (Cornish et al., 1998 [PubMed 9731071]).

Target:	Sialic Acid Binding Ig Like Lectin 5 (SIGLEC5)
Clonality:	Polyclonal
Reactivity:	Human
Tested Applications:	ELISA, WB
Host:	Rabbit
Recommended dilutions:	WB: 1/1000. Optimal dilutions/concentrations should be determined by the end user.
Conjugation:	Unconjugated
Immunogen:	KLH-conjugated synthetic peptide between 104-132 amino acids from the N-terminal region of human SIGLEC5.
Isotype:	IgG
Form:	Liquid
Purification:	Purified through a protein A column, followed by peptide affinity purification.
Storage:	Aliquot and store at -20°C. Avoid repeated freeze/thaw cycles.

Datasheet

Version: 2.0.0

Revision date: 10 Aug 2025



UniProt Primary AC: O15389 ([UniProt](#), [ExPASy](#))

Gene Symbol: SIGLEC5

KEGG: hsa:8778

String: [9606.ENSP00000470259](#)

Molecular Weight: Calculated MW: 60.7 kDa

Buffer: PBS containing 0.09% sodium azide.

Note: THIS PRODUCT IS FOR RESEARCH USE ONLY. NOT FOR USE IN DIAGNOSTIC, THERAPEUTIC OR COSMETIC PROCEDURES. NOT FOR HUMAN OR ANIMAL CONSUMPTION.

For Reference Only