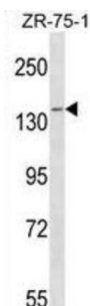


## PAN Deadenylation Complex Catalytic Subunit 2 (PAN2) Antibody

Catalogue No.: abx028976



This gene encodes a deadenylase that functions as the catalytic subunit of the polyadenylate binding protein dependent poly (A) nuclease complex. The encoded protein is a magnesium dependent 3' to 5' exoribonuclease that is involved in the degradation of cytoplasmic mRNAs. Alternate splicing results in multiple transcript variants.

**Target:** PAN Deadenylation Complex Catalytic Subunit 2 (PAN2)

**Clonality:** Polyclonal

**Reactivity:** Human

**Tested Applications:** ELISA, WB

**Host:** Rabbit

**Recommended dilutions:** WB: 1/1000. Optimal dilutions/concentrations should be determined by the end user.

**Conjugation:** Unconjugated

**Immunogen:** KLH-conjugated synthetic peptide between 860-888 amino acids from the C-terminal region of human PAN2.

**Isotype:** IgG

**Form:** Liquid

**Purification:** Purified through a protein A column, followed by peptide affinity purification.

**Storage:** Aliquot and store at -20°C. Avoid repeated freeze/thaw cycles.

**UniProt Primary AC:** Q504Q3 ([UniProt](#), [ExPASy](#))

**KEGG:** hsa:9924

# Datasheet

Version: 2.0.0

Revision date: 15 Oct 2025



**String:** [9606.ENSPO0000401721](#)

**Molecular Weight:** Calculated MW: 135 kDa

**Buffer:** PBS containing 0.09% sodium azide.

**Specificity:** Predicted to react with Mouse, Rat and Chicken PAN2.

**Note:** THIS PRODUCT IS FOR RESEARCH USE ONLY. NOT FOR USE IN DIAGNOSTIC, THERAPEUTIC OR COSMETIC PROCEDURES. NOT FOR HUMAN OR ANIMAL CONSUMPTION.

For Reference Only