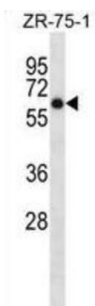


Arylsulfatase D (ARSD) Antibody

Catalogue No.: abx028977



The protein encoded by this gene is a member of the sulfatase family. Sulfatases are essential for the correct composition of bone and cartilage matrix. This encoded protein is postrationally glycosylated and localized to the lysosome. Two transcript variants encoding different isoforms have been found for this gene.

Target: Arylsulfatase D (ARSD)

Clonality: Polyclonal

Reactivity: Human

Tested Applications: ELISA, WB

Host: Rabbit

Recommended dilutions: WB: 1/1000. Optimal dilutions/concentrations should be determined by the end user.

Conjugation: Unconjugated

Immunogen: KLH-conjugated synthetic peptide between 502-532 amino acids from the C-terminal region of human ARSD.

Isotype: IgG

Form: Liquid

Purification: Purified through a protein A column, followed by peptide affinity purification.

Storage: Aliquot and store at -20°C. Avoid repeated freeze/thaw cycles.

UniProt Primary AC: P51689 ([UniProt](#), [ExPASy](#))

KEGG: hsa:414

Datasheet

Version: 4.0.0

Revision date: 13 Oct 2025



String: [9606.ENSF00000370546](#)

Molecular Weight: Calculated MW: 64.9 kDa

Buffer: PBS containing 0.09% sodium azide.

Note: THIS PRODUCT IS FOR RESEARCH USE ONLY. NOT FOR USE IN DIAGNOSTIC, THERAPEUTIC OR COSMETIC PROCEDURES. NOT FOR HUMAN OR ANIMAL CONSUMPTION.

For Reference Only