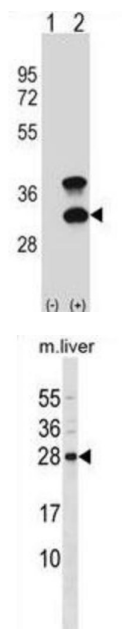


# B-Cell Antigen Receptor Complex-Associated Protein Beta Chain (CD79B) Antibody

Catalogue No.: abx028989



The B lymphocyte antigen receptor is a multimeric complex that includes the antigen-specific component, surface immunoglobulin (Ig). Surface Ig non-covalently associates with two other proteins, Ig-alpha and Ig-beta, which are necessary for expression and function of the B-cell antigen receptor. This gene encodes the Ig-beta protein of the B-cell antigen component. Alternatively spliced transcript variants encoding different isoforms have been described.

**Target:** B-Cell Antigen Receptor Complex-Associated Protein Beta Chain (CD79B)

**Clonality:** Polyclonal

**Reactivity:** Human, Mouse

**Tested Applications:** ELISA, WB

**Host:** Rabbit

**Recommended dilutions:** WB: 1/1000. Optimal dilutions/concentrations should be determined by the end user.

**Conjugation:** Unconjugated

**Immunogen:** KLH-conjugated synthetic peptide between 93-121 amino acids from the Central region of human CD79B.

**Isotype:** IgG

# Datasheet

Version: 3.0.0

Revision date: 05 Oct 2025



<b>Form:</b>	Liquid
<b>Purification:</b>	Purified through a protein A column, followed by peptide affinity purification.
<b>Storage:</b>	Aliquot and store at -20°C. Avoid repeated freeze/thaw cycles.
<b>UniProt Primary AC:</b>	P40259 ( <a href="#">UniProt</a> , <a href="#">ExPASy</a> )
<b>Gene Symbol:</b>	CD79B
<b>KEGG:</b>	hsa:974
<b>String:</b>	<a href="#">9606.ENSP00000376544</a>
<b>Molecular Weight:</b>	Calculated MW: 26 kDa
<b>Buffer:</b>	PBS containing 0.09% sodium azide.
<b>Note:</b>	THIS PRODUCT IS FOR RESEARCH USE ONLY. NOT FOR USE IN DIAGNOSTIC, THERAPEUTIC OR COSMETIC PROCEDURES. NOT FOR HUMAN OR ANIMAL CONSUMPTION.

For Reference Only