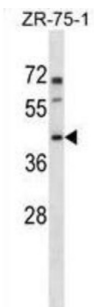


Pannexin 3 (PANX3) Antibody

Catalogue No.: abx028992



WB analysis of ZR-75-1 cell line lysates.

The protein encoded by this gene belongs to the innexin family. Innexin family members are known to be the structural components of gap junctions.

Target:	Pannexin 3 (PANX3)
Clonality:	Polyclonal
Reactivity:	Human
Tested Applications:	ELISA, WB
Host:	Rabbit
Recommended dilutions:	WB: 1/1000. Optimal dilutions/concentrations should be determined by the end user.
Conjugation:	Unconjugated
Immunogen:	KLH-conjugated synthetic peptide between 3-31 amino acids from the N-terminal region of human PANX3.
Isotype:	IgG
Form:	Liquid
Purification:	Purified through a protein A column, followed by peptide affinity purification.
Storage:	Aliquot and store at -20°C. Avoid repeated freeze/thaw cycles.
UniProt Primary AC:	Q96QZ0 (UniProt , ExPASy)
Gene Symbol:	PANX3

Datasheet

Version: 3.0.0

Revision date: 21 Jun 2025



KEGG: hsa:116337

String: [9606.ENSP00000284288](#)

Molecular Weight: Calculated MW: 44.7 kDa

Buffer: PBS containing 0.09% sodium azide.

Concentration: 0.5 mg/ml

Note: THIS PRODUCT IS FOR RESEARCH USE ONLY. NOT FOR USE IN DIAGNOSTIC, THERAPEUTIC OR COSMETIC PROCEDURES. NOT FOR HUMAN OR ANIMAL CONSUMPTION.

For Reference Only