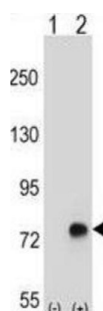
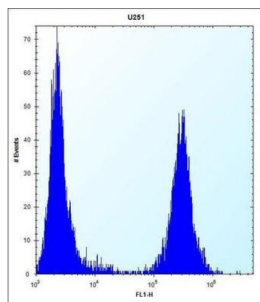


Transforming Growth Factor Beta Induced Protein (TGFB1) Antibody

Catalogue No.: abx029007



This gene encodes an RGD-containing protein that binds to type I, II and IV collagens. The RGD motif is found in many extracellular matrix proteins modulating cell adhesion and serves as a ligand recognition sequence for several integrins. This protein plays a role in cell-collagen interactions and may be involved in endochondrial bone formation in cartilage. The protein is induced by transforming growth factor-beta and acts to inhibit cell adhesion. Mutations in this gene are associated with multiple types of corneal dystrophy.

Target: Transforming Growth Factor Beta Induced Protein (TGFB1)

Clonality: Polyclonal

Reactivity: Human

Tested Applications: ELISA, WB, FCM

Host: Rabbit

Recommended dilutions: WB: 1/1000, FCM: 1/10 - 1/50. Optimal dilutions/concentrations should be determined by the end user.

Conjugation: Unconjugated

Immunogen: KLH-conjugated synthetic peptide between 106-135 amino acids from the N-terminal region of human TGFB1.

Isotype: IgG

Datasheet

Version: 4.0.0
Revision date: 18 Sep 2025



Form:	Liquid
Purification:	Purified through a protein A column, followed by peptide affinity purification.
Storage:	Aliquot and store at -20°C. Avoid repeated freeze/thaw cycles.
UniProt Primary AC:	Q15582 (UniProt , ExPASy)
KEGG:	hsa:7045
String:	9606.ENSP00000416330
Molecular Weight:	Calculated MW: 74.7 kDa
Buffer:	PBS containing 0.09% sodium azide.
Specificity:	Predicted to react with Mouse, Cow, Pig and Rabbit TGFBI.
Note:	THIS PRODUCT IS FOR RESEARCH USE ONLY. NOT FOR USE IN DIAGNOSTIC, THERAPEUTIC OR COSMETIC PROCEDURES. NOT FOR HUMAN OR ANIMAL CONSUMPTION.

For Reference Only