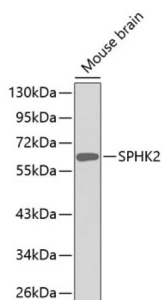


Sphingosine Kinase 2 (SPHK2) Antibody

Catalogue No.: abx002301



Western blot analysis of extracts of Mouse brain using SPHK2 Antibody.

SPHK2 Antibody is a Rabbit Polyclonal antibody against SPHK2. This gene encodes one of two sphingosine kinase isozymes that catalyze the phosphorylation of sphingosine into sphingosine 1-phosphate. Sphingosine 1-phosphate mediates many cellular processes including migration, proliferation and apoptosis, and also plays a role in several types of cancer by promoting angiogenesis and tumorigenesis. The encoded protein may play a role in breast cancer proliferation and chemoresistance. Alternatively spliced transcript variants encoding multiple isoforms have been observed for this gene. [provided by RefSeq, Aug 2011].

Target:	Sphingosine Kinase 2 (SPHK2)
Clonality:	Polyclonal
Reactivity:	Human, Mouse
Tested Applications:	WB
Host:	Rabbit
Recommended dilutions:	WB: 1/500 - 1/1000. Optimal dilutions/concentrations should be determined by the end user.
Conjugation:	Unconjugated
Immunogen:	Recombinant fusion protein corresponding to human SPHK2
Isotype:	IgG
Form:	Liquid
Purification:	Purified by affinity chromatography.
Storage:	Aliquot and store at -20°C. Avoid repeated freeze/thaw cycles.
UniProt Primary AC:	Q9NRA0 (UniProt , ExPASy)

Datasheet

Version: 4.0.0

Revision date: 13 Sep 2025



Gene Symbol: SPHK2

GeneID: [56848](#)

NCBI Accession: NP_001191088.1

String: [9606.ENSP00000245222](#)

Molecular Weight: Calculated MW: 62 kDa/65 kDa/69 kDa/80 kDa
Observed MW: 65 kDa

Buffer: PBS, pH 7.3, containing 0.02% sodium azide, 50% glycerol.

Concentration: 1 mg/ml

Note: THIS PRODUCT IS FOR RESEARCH USE ONLY. NOT FOR USE IN DIAGNOSTIC, THERAPEUTIC OR COSMETIC PROCEDURES. NOT FOR HUMAN OR ANIMAL CONSUMPTION.

For Reference Only