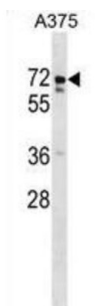


USP17L2 Antibody

Catalogue No.: abx029016



This product is currently in development. The lead time for this product may be several months. Please contact us at info@abbexa.com for an updated lead time before purchasing this product.

DUB3 is a member of the ubiquitin processing protease (UBP) subfamily of deubiquitinating enzymes. See USP1 (MIM 603478) for background information.

Target: USP17L2

Clonality: Polyclonal

Reactivity: Human

Tested Applications: ELISA, WB

Host: Rabbit

Recommended dilutions: WB: 1/1000. Optimal dilutions/concentrations should be determined by the end user.

Conjugation: Unconjugated

Immunogen: KLH-conjugated synthetic peptide between 476-503 amino acids from the C-terminal region of human USP17L2.

Isotype: IgG

Form: Liquid

Purification: Purified through a protein A column, followed by peptide affinity purification.

Storage: Aliquot and store at -20°C. Avoid repeated freeze/thaw cycles.

UniProt Primary AC: Q6R6M4 ([UniProt](#), [ExPASy](#))

Datasheet

Version: 3.0.0

Revision date: 18 Mar 2025



Gene Symbol: USP17L2

NCBI Accession: NP_958804.2

KEGG: hsa:377630

String: [9606.ENSP0000033329](#)

Molecular Weight: Calculated MW: 59.6 kDa

Buffer: PBS containing 0.09% sodium azide.

Note: THIS PRODUCT IS FOR RESEARCH USE ONLY. NOT FOR USE IN DIAGNOSTIC, THERAPEUTIC OR COSMETIC PROCEDURES. NOT FOR HUMAN OR ANIMAL CONSUMPTION.

For Reference Only